

TECHNICAL MANUAL

**ORGANIZATIONAL, DIRECT SUPPORT, AND GENERAL
SUPPORT MAINTENANCE REPAIR PARTS AND SPECIAL
TOOLS LIST (INCLUDING DEPOT MAINTENANCE
REPAIR PARTS AND SPECIAL TOOLS)**

DIGITAL VOLTMETER AN/GSM-64A

**ORGANIZATIONAL, DIRECT SUPPORT, AND GENERAL SUPPORT
 MAINTENANCE REPAIR PARTS AND SPECIAL TOOLS LIST
 (INCLUDING DEPOT MAINTENANCE REPAIR PARTS AND SPECIAL TOOLS)**

DIGITAL VOLTMETER AN/GSM-64A

Current as of 14 June 1974

	Paragraph	Page
SECTION I. INTRODUCTION		
Scope _____	1 - 1	1 - 1
General _____	1-2	1-1
Explanation of columns _____	1-3	1-1
Special information _____	1-4	1-3
Location of repair parts _____	1-5	1-3
Recommendations for maintenance publication improvements _____	1-6	1-3
REPAIR PARTS FOR ORGANIZATIONAL MAINTENANCE (NOT APPLICABLE)		
SPECIAL TOOLS, TEST AND SUPPORT EQUIPMENT FOR ORGANIZATIONAL MAINTENANCE (NOT APPLICABLE)		
SECTION II. REPAIR PARTS FOR DIRECT SUPPORT, GENERAL SUPPORT, AND DEPOT MAINTENANCE _____		2-1
SPECIAL TOOLS, TEST AND SUPPORT EQUIPMENT FOR DIRECT SUPPORT, GENERAL SUPPORT, AND DEPOT MAINTENANCE (NOT APPLICABLE)		
III. INDEX-FEDERAL STOCK NUMBER AND REFERENCE NUMBER CROSS-REFERENCE TO FIGURE AND ITEM NUMBER OR REFERENCE DESIGNATION _____		3-1
IV. INDEX-REFERENCE DESIGNATION CROSS-REFERENCE TO PAGE NUMBER _____		4-1

LIST OF ILLUSTRATIONS

<i>Number</i>	<i>Title</i>	<i>Page</i>
1	Digital Voltmeter AN/GSM-64A _____	2-9
2	Digital Voltmeter _____	2-10
3	Voltmeter Subassembly _____	2-11
4	Shields and Plates _____	2-12
5	Signal Conditioner Assembly A2 _____	2-13
6	Main Board Assembly A3 _____	2-14
7	Main Board Assembly A3 _____	2-15
8	Main Board Assembly, Bottom View _____	2-16
9	Lamp Assembly _____	2-17
10	Test Lead A1 _____	2-18
11	Test Lead Set A2 _____	2-19
12	Main Board Assembly A3 _____	2-20

SECTION I

INTRODUCTION

1-1. Scope

This manual lists repair parts and special tools required for the performance of organizational, direct support, general support and depot maintenance of the Digital Voltmeter An/GSM-64A.

NOTE

No special tools, test, and support equipment are required.

1-2. General

This Repair Parts and Special Tools List is divided into the following sections:

a. Repair Parts for Direct Support, General Support, and Depot Maintenance—Section II. A list of repair parts authorized at the direct support, general support and depot levels for the performance of maintenance. This list also includes parts which must be removed for replacement of the authorized parts. Parts are listed with the attaching parts listed immediately following the parts they attach.

b. Index-Federal Stock Number and Reference Number Cross-Reference to Figure and Item Number or Reference Designation—Section III. A list of Federal stock numbers in ascending numerical sequence, followed by a list of reference numbers appearing in ascending alphanumeric sequence, cross-referenced to the illustration figure number and reference designation.

c. Index-Reference Designation Cross-Reference to Page Number—Section IV. A list of reference designations cross-referenced to page numbers.

1-3. Explanation of Columns

The following provides an explanation of columns found in the tabular lists:

a. Source, Maintenance and Recoverability Codes (SMR).

(1) *Source codes:* Codes entered in the first and second digit of the uniform code format.

<i>Code</i>	<i>Definition</i>
P A	- Item procured and stocked for anticipated or known usage.
P B	- Item procured and stocked for insurance purposes because essentiality dictates that a minimum quantity be available in supply system because procurement leadtime prevents rapid acquisition of the item.
P C	- Item procured and stocked and which would otherwise be coded PA except that it is deteriorative in nature (processing a shelf life code other than 0).
P D	- Support item, excluding support equipment, procured for initial issue or outfitting and stocked only for subsequent or additional initial issues or outfitting. Not subject to automatic replenishment. This code should be used on maintenance float items.
P E	- Support equipment procured and stocked for initial issue or outfitting to specified maintenance repair activities. This code will be applied to tools and test equipment.
P G	- Item procured and stocked to provide for sustained support for the life of the equipment. It is applied to an item peculiar to the equipment which because of probable discontinuance or shut down of production facilities would prove uneconomical to reproduce at a later time. This code will not be used for items that are procured with rights and data, since this would indicate a potential re-buy of the item.
K D	- An item of depot overhaul/kit and not purchased separately. Depot kit defined as a kit that provides items required at the time of overhaul or repair.
K F	- An item of a maintenance kit and not purchased separately. Maintenance kit defined as a kit that provides an item that can be replaced at organizational or intermediate levels of maintenance.

<i>Code</i>	<i>Definition</i>
KB	Item included in both a depot overhaul/repair kit and a maintenance kit.
MO	Item to be manufactured or fabricated at organizational level.
MF	Item to be manufactured or fabricated at the direct support level.
MH	Item to be manufactured or fabricated at the general support level.
MD	Item to be manufactured or fabricated at depot maintenance level.
AO	Item to be assembled at organizational level.
AF	Item to be assembled at direct support level.
AH	Item to be assembled at general support level.
AD	Item to be assembled at depot maintenance level.
XA	Item is not procured or stocked because the requirements for the item will result in the replacement of the next higher assembly.
XB	Item is not procured or stocked. If not available through salvage, requisition.
XC	Installation drawing diagram, instruction sheet, field service drawing, that is identified by manufacturer part number.
XD	A low mortality support item that is not stocked. When required, items will be requested and provided through normal supply channels. Item differs from an XB source in that there generally is not reasonable chance of obtaining the item from cannibalization sources.

(2) *Maintenance codes:* Codes entered in the third and fourth positions of the uniform code format.

(a) *Third position:* The maintenance code entered in the third position will indicate the lowest maintenance level authorized to remove/replace, and use the item. The decision to code the item for removal and replacement at the indicated maintenance level will require that all the capabilities necessary to install and insure proper operation after installation of a replacement item are provided.

- O—Support item is removed, replaced, and used at the organizational level of maintenance.
- F—Support item is removed, replaced, used at the direct support level.
- H—Support item is removed, replaced, used at the general support level.
- D—Support items that are removed, replaced, used at depot only.

(b) *Fourth position:* The maintenance code entered in the fourth position indicates whether the item is to be repaired and identifies the lowest maintenance level with the capability to perform complete repair. The decision to code the support item for repair at the indicated maintenance levels requires that all maintenance capability for the support items be provided to that level. This does not preclude some repair which may be accomplished at a lower level of maintenance. When a maintenance code is not used a dash (-) will be entered.

- O—The lowest maintenance level capable of complete repair of the support item is the organizational level.
- F—The lowest maintenance level capable of complete repair of the support item is the direct support level.
- H—The lowest maintenance level capable of complete repair of the support item is the general support level.
- D—The lowest maintenance level capable of complete repair of the support item is the depot level.
- L—Repair restricted to designated Specialized Repair Activity.
- Z—Non-reparable. No repair is authorized.
- B—No repair is authorized. The item may be reconditioned by adjusting, lubricating, etc., at the user level. No parts or special tools.

(3) *Recoverability code:* Code entered in the fifth position. Recoverability codes are assigned to support items to indicate the disposition action on unserviceable items.

- Z—Non-reparable item. When unserviceable condemn and dispose at the level indicated in column three.
- O—Reparable item. When uneconomically reparable, condemn and dispose at organizational level.
- F—Reparable item. When uneconomically reparable, condemn and dispose at the direct support level.
- H—Reparable item. When uneconomically reparable, condemn and dispose at the general support level.
- D—Reparable item. When beyond lower level repair capability return to depot. Condemnation and disposal not authorized below depot.
- L—Reparable item. Repair, condemnation and disposal not authorized below depot/Specialized Repair Activity level.

A—Item requires special handling or condemnation procedures because of specific reasons (i.e., precious metal content, high dollar value, critical material or hazardous material). Refer to appropriate manuals/directives for specific instructions.

b. Federal Stock Number. This column indicates the Federal stock number assigned to the item and will be used for requisitioning purposes.

c. Description. This column indicates the Federal item name and a minimum description required to identify the item. The last line indicates the reference number followed by the applicable Federal Supply Code for Manufacturer (FSCM) in parentheses. The FSCM is used as an element in item identification to designate manufacturer or distributor or Government agency, etc., and is identified in SB 708-42.

d. Unit of Measure (U/M). A two-character alphabetic abbreviation indicating the amount or quantity of the item upon which the allowances are based; e.g. ft, ea, pr, etc.

e. Quantity Incorporated in Unit. This column indicates the quantity of the item used in an assembly. Subsequent appearances of the same item in the same assembly are indicated by the letters "REF."

f. 15-Day Organizational Maintenance. Not applicable.

g. Allowances (30-Day DS/GS Maintenance, 1 Year Per Equipment (Contingency), and Depot Maintenance. Items authorized for requisition as required are identified by an asterisk in the allowance column. Subsequent appearances of the same item will have the letters "REF."

h. Illustrations. This column is divided as follows:

(1) *Figure number.* Indicates the figure number of the illustration in which the item is shown.

(2) *Item number or reference designation.* Indicates the reference designation used to identify the item in the illustration.

1-4. Special Information

The following publication pertains to the AN/GSM-64A.

TM 11-6625-524-14 Operator, Organizational, Direct Support, General Support and Depot Maintenance Manual: Digital Voltmeter AN/GSM-64A

1-5. Location of Repair Parts

a. When a Federal stock number or reference number is unknown:

(1) Find the illustration covering the repair part.

(2) Identify the repair part on the illustration and note the reference designation of the repair part.

(3) When the reference designation is determined, refer to the reference designation index (sec IV). The reference designations are listed in alphanumeric ascending order and are cross-references to the page number on which they appear in the repair parts lists (sec II). Refer to the page number noted in the index and locate the item in the repair parts list (col. 10b).

b. When the Federal stock number or reference number is known:

(1) Use the Federal stock number and reference number index (sec III) and find the pertinent Federal stock number or reference number. This index is in ascending FSN sequence, followed by a list of reference numbers in ascending alphanumeric sequence, cross-referenced to the illustration figure number and reference designation.

(2) Use the repair parts list (sec II) to find the repair part and the illustration figure number and reference designation referenced in the FSN and reference number index (see III).

1-6. Recommendations for Maintenance Publication Improvements

The reporting of errors, omissions, and recommendations for improving this publication by the individual user is encouraged. Reports should be submitted on DA Form 2028 (Recommended Changes to Publications and Blank Forms) and forwarded direct to Commander, US Army Electronics Command, ATTN: AMSEL-MA-S, Fort Monmouth, NJ 07703.

SECTION II REPAIR PARTS FOR DIRECT SUPPORT, GENERAL SUPPORT, AND DEPOT MAINTENANCE														
(1)	(2)	(3)	(4)	(5)	(6)	(7)			(8)		(9)	(10)		
SMR	FEDERAL	DESCRIPTION	UNIT	QTY	30-DAY DS MAINT	30-DAY GS MAINT			1 YR	DEPOT	ILLUSTRATIONS			
CODE	STOCK		OF	INC	ALLOWANCE	ALLOWANCE			ALW	MAINT	(a)	(b)		
CODE	NUMBER		MEAS	IN	(a)	(b)	(c)	(a)	(b)	(c)	EQUIP	100	FIG	ITEM NO. O
				UNIT	1-20	21-50	51-100	1-20	21-50	51-100	CNTGCV	PER	NO.	REFERENCE
		REFERENCE NUMBER & MFR. CODE												DESIGNATIO
	6625-870-2264	VOLTMETER, DIGITAL AN/GSM-64A											1	
PAHZZ	6625-432-1443	LEAD, TEST: 34-66 (03626)	EA	1				*	*	*	*	*	1	A1
PAHZZ	5940-404-5206	CLIP, ELECTRICAL: 60CS (76545)	EA	4				*	*	*	*	*	10	A1E1
PAHZZ	5975-922-0877	INSULATION, SLEEVING: 62YELLOW (76545)	EA	1				*	*	*	*	*	10	A1MP1
PAHZZ	5935-434-2948	PLOG, TIP: 117207-426-107 (83330)	EA	1				*	*	*	*	*	10	A1E2
PAHZZ	6145-583-3781	WIRE, ELECTRICAL: NO20AWG (71002)	EA	1				*	*	*	*	*	10	A1W1
PAHZZ	6625-432-1444	LEAD SET, TEST: 34-65 (03626)	EA	1				*	*	*	*	*	1	A2
PAHZZ	6145-542-6092	CABLE, RADIO FREQUENCY: RG58CU (81349)	FT	6				*	*	*	*	*	11	A2W1
PAHZZ	5940-404-5206	CLIP, ELECTRICAL: 60CS (76545)	EA	REF				REF	REF	REF	REF	REF	11	A2E1, 2, 3
PAHZZ	5975-284-6588	INSULATION, SLEEVING: 62BLK (76545)	EA	1				*	*	*	*	*	11	A2MP1
PAHZZ	5975-958-6490	INSULATION, SLEEVING: 62BLU (76545)	EA	1				*	*	*	*	*	11	A2MP2
PAHZZ	5975-613-9064	INSULATION, SLEEVING: 62RED (76545)	EA	1				*	*	*	*	*	11	A2MP3
PAHZZ	5935-134-1420	PLOG, TIP: 34-65-1-2 (03626)	EA	1				*	*	*	*	*	11	A2E4
PAHZZ	5935-134-1421	PLOG, TIP: 34-65-1-3 (03626)	EA	1				*	*	*	*	*	11	A2E5
PAHZZ	5975-134-1319	BAND, MARKER, CABLE: 34-65-13 (03626)	EA	1				*	*	*	*	*	11	A2MP4
PAHZZ	6145-583-3781	WIRE, ELECTRICAL: NO20AWG (71002)	EA	1				*	*	*	*	*	11	A2W2
ADDDD		VOLTMETER, DIGITAL: 34-50 (03626)	EA	1									1	A3
PAOZZ	5355-457-6321	KNOB: RB530W10-24 (86797)	EA	2				*	*	*	*	*	2	A3MP1, 2
PAHZZ	5340-450-5679	HANDLE, BAIL: 34-59 (03626)	EA	1				*	*	*	*	*	2	A3MP3
PAHZZ	6625-432-1445	BRACKET, MOUNTING: 34-60 (03626)	EA	2				*	*	*	*	*	2	A3MP4
PAHZZ	5340-452-1237	BUMPER, RUBBER: BH2085W475 (08065)	EA	4				*	*	*	*	*	2	A3MP5, 6, 7,
PAHZZ	5310-631-1291	NUT, PLAIN, HEXAGON: NAS671-6 (80205)	EA	10				*	*	*	*	*	2	A3MP5H1
PAHZZ	5305-984-4989	SCREW, MACHINE: MS35206-229 (96906)	EA	12				*	*	*	*	*	2	A3MP5H1
PAHZZ	5310-722-5998	WASHER, FLAT: MS15795-806 (96906)	EA	4				*	*	*	*	*	2	A3MP5H1
PAHZZ	5310-045-4007	WASHER, SPLIT: MS35338-41 (96906)	EA	30				*	*	*	*	*	2	A3MP5H1
PAHZZ	6625-273-0780	COVER, VOLTMETER: 34-37-2 (03626)	EA	1				*	*	*	*	*	2	A3MP9
PAHZZ	5305-984-4989	SCREW, MACHINE: MS35206-229 (96906)	EA	REF				REF	REF	REF	REF	REF	2	A3MP9H2
PAHZZ	5310-045-4007	WASHER, SPLIT: MS35338-41 (96906)	EA	REF				REF	REF	REF	REF	REF	2	A3MP9H4

(1) SMR CODE	(2) FEDERAL STOCK NUMBER	(3) DESCRIPTION	(CONTINUED)												
			USABLE ON CODE	(4) UNIT OF MEAS	(5) QTY INC UNIT	(6)			(7)			(8) 1 YR ALW PER EQUIP CNTGNCY	(9) DEPOT MAINT ALW PER 100 EQUIP	(10)	
						30-DAY ALLOWANCE	DS (a) 1-20	MAINT (b) 21-50	30-DAY ALLOWANCE	GS (a) 1-20	MAINT (b) 21-50			(c) 51-100	ILLUSTRATIONS (a) FIG NO.
PAHZZ	6625-432-1447	REFERENCE NUMBER & MFR. CODE COVER, VOLTMETER: 34-38-2 (03626)	EA	1				*	*	*	*	*	*	2	A3MP10
PAHZZ	5305-984-4989	SCREW, MACHINE: MS35206-229 (96906)	EA	REF				REF	REF	REF	REF	REF	REF	2	A3MP10H2
PAHZZ	5310-045-4007	WASHER, SPLIT: MS35338-41 (96906)	EA	REF				REF	REF	REF	REF	REF	REF	2	A3MP10H2
PAHZZ	9905-134-1317	PLATE, IDENTIFICATION: 34-45 (03626)	EA	1				*	*	*	*	*	*	3	A3MP11
PAHZZ	6695-187-3747	BEZEL: 34-49 (03626)	EA	1				*	*	*	*	*	*	2	A3MP12
PAHZZ	5310-631-1294	NUT, PLAIN, HEXAGON: NAS671-6 (80205)	EA	REF				REF	REF	REF	REF	REF	REF	2	A3MP12H4
PAHZZ	5305-957-7817	SCREW, MACHINE: MS24693S26 (96906)	EA	4				*	*	*	*	*	*	2	A3MP12H4
PAHZZ	5310-045-4007	WASHER, SPLIT: MS35338-41 (96906)	EA	REF				REF	REF	REF	REF	REF	REF	2	A3MP12H4
PAHZZ		VOLTMETER, SUBASSEMBLY: 34-67 (03626)	EA	1				*	*	*	*	*	*	2	A3A1
PAHZZ	5975-479-3304	BUSHING, STRAIN RELIEF: SR5P4 (28520)	EA	1				*	*	*	*	*	*	3	A3A1MP1
PAHZZ	6150-464-1810	CABLE ASSEMBLY, POWER ELECTRICAL: 34-61 (03626)	EA	1				*	*	*	*	*	*	2	A3A1A1
PAHZZ	6145-752-1307	CABLE, POWER, ELECTRICAL: C003LGF3-18-0260 (81349)	FT	7				*	*	*	*	*	*	3	A3A1A1W1
PAHZZ	5935-843-7362	CONNECTOR, PLUG, ELECTRICAL: MS24663 (96906)	EA	1				*	*	*	*	*	*	3	A3A1A1P1
PAHZZ	6625-432-1448	SHIELD, TOP: 34-52 (03626)	EA	1				*	*	*	*	*	*	4	A3A1MP2
PAHZZ	5365-487-4625	SPACER, SLEEVE: 2001-55 (03626)	EA	8				*	*	*	*	*	*	4	A3A1MP2H4
PAHZZ	5305-051-6521	SCREW, MACHINE: MS24693S25 (96906)	EA	8				*	*	*	*	*	*	4	A3A1MP2H4
PAHZZ	6625-432-1449	SHIELD, BOTTOM: 34-53 (03626)	EA	1				*	*	*	*	*	*	4	A3A1MP3
PAHZZ	5365-487-4625	SPACER, SLEEVE: 2001-55 (03626)	EA	REF				REF	REF	REF	REF	REF	REF	4	A3A1MP3H4
PAHZZ	5305-051-6521	SCREW, MACHINE: MS24693S25 (96906)	EA	REF				REF	REF	REF	REF	REF	REF	4	A3A1MP3H4
PAHZZ	6625-020-9798	SHIELD, SIDE: 34-58 (03626)	EA	2				*	*	*	*	*	*	3	A3A1MP4,5
PAHZZ	5920-556-0144	FUSEHOLDER: FHN20G (81349)	EA	1				*	*	*	*	*	*	3	A3A1XF1
PAOZZ	5920-227-9142	FUSE, CARTRIDGE: F02B250V1-4A (81349)	EA	1				*	*	*	*	*	*	3	A3A1F1
PAHZZ	5935-162-8619	JACK, TIP: 2854 (05276)	EA	2				*	*	*	*	*	*	3	A3A1J1
PAHZZ	5935-162-8619	JACK, TIP: 2854 (05276)	EA	REF				REF	REF	REF	REF	REF	REF	1	A3A1J1
PAHZZ	5935-435-8614	JACK, TIP: 2854-6 (05276)	EA	2				*	*	*	*	*	*	3	A3A1J3
PAHZZ	5935-435-8614	JACK, TIP: 2854-6 (05276)	EA	REF				REF	REF	REF	REF	REF	REF	1	A3A1J3
PAHZZ	5935-162-8622	JACK, TIP: 2854-2 (05276)	EA	2				*	*	*	*	*	*	3	A3A1J5
PAHZZ	5935-162-8622	JACK, TIP: 2854-2 (05276)	EA	REF				REF	REF	REF	REF	REF	REF	1	A1J6

SECTION V REPAIR PARTS FOR DIRECT SUPPORT, GENERAL SUPPORT, AND DEPOT MAINTENANCE (CONTINUED)										
(1)	(2)	(3)	(4)	(5)	(6)	(7)	(8)	(9)	(10)	
SMR	FEDERAL	DESCRIPTION	UNIT	QTY	30-DAY DS MAINT	30-DAY GS MAINT	1 YR	DEPOT	ILLUSTRATIONS	
CODE	STOCK		OF	INC IN	ALLOWANCE	ALLOWANCE	ALW PER	MAINT	(a)	
NUMBER			MEAS	UNIT	(a)	(b)	EQUIP	100	FIG	
					(c)	(c)	CNTGNCY	EQUIP	NO.	
			USABLE ON		1-20	21-50			OR	
			CODE		51-100	51-100			REFERENCE	
									DESIGNATION	
PAHZZ	5935-134-1419	REFERENCE NUMBER & MFR. CODE JACK, TIP: 2854-4 (05276)	EA	1			*	*	3	A3A1J7
PAHZZ	5930-426-8582	SWITCH, PUSH: 46256LFR (82389)	EA	1			*	*	3	A3A1S9
PAHZZ	5310-934-9739	NUT, FLAIN, HEXAGON: MS35649-242 (96906)	EA	18			*	*	3	A3A1S9H2
PAHZZ	5305-993-0190	SCREW, MACHINE: MS35206-214 (96906)	EA	5			*	*	3	A3A1S9H2
PAHZZ	5310-543-2410	WASHER, SPLIT: MS35338-40 (96906)	EA	37			*	*	3	A3A1S9H2
PAHZZ	5950-468-2860	TRANSFORMER, POWER, STEP-DOWN: D305 (03626)	EA	1			*	*	3	A3A1T1
PAHZZ	5305-984-6191	SCREW, MACHINE: MS35206-243 (96906)	EA	4			*	*	3	A3A1T1H4
PAHZZ	5310-045-3299	WASHER, SPLIT: MS35338-42 (96906)	EA	4			*	*	3	A3A1T1H4
PAHZZ	6625-432-1450	PLATE, MOUNTING: 34-41 (03626)	EA	1			*	*	4	A3A1MP6
PAHZZ	5305-984-4984	SCREW, MACHINE: MS35206-227 (96906)	EA	8			*	*	4	A3A1MP6H8
ADDDD		CIRCUIT CARD ASSEMBLY 34-48 (03626)	EA	1					3	A3A1A2
PAHZZ	6625-432-1459	BRACKET, MOUNTING: 34-51 (03626)	EA	4			*	*	5	A3A1A2MP1,2
PAHZZ	5305-889-3116	SCREW, MACHINE: MS35206-213 (96906)	EA	8			*	*	5	A3A1A2MP1H2
PAHZZ	5305-889-2998	SCREW, MACHINE: MS35206-216 (96906)	EA	2			*	*	5	A3A1A2MP1H2
PAHZZ	5310-543-2410	WASHER, LOCK MS35338-40 (96906)	EA	REF			REF	REF	5	A3A1A2MP1H4
PAHZZ	6145-080-4383	CABLE, RADIO FREQUENCY: RG188AU (81349)	FT	1			*	*	5	A3A1A2W1
PAHZZ	5910-404-1180	CAPACITOR, FIXED PAPER DIELECTRIC: C281ABA22K (73445)	EA	1			*	*	5	A3A1A2C1
PAHZZ	5935-167-6247	CONNECTOR, RECEPTACLE, ELELCTRICAL: 225-21021-205 (02660)	EA	1			*	*	5	A3A1A2J1
PAHZZ	5935-063-8248	PIN STRAIGHT: 380598-2 (00779)	EA	96			*	*		A3A1A2MP6
PAHZZ	5962-762-0644	INTEGRATED CIRCUIT: N74192B (18324)	EA	1			*	*	5	A3A1A2U1
PAHZZ	5962-341-0544	INTEGRATED CIRCUIT: N7404A (18324)	EA	1			*	*	5	A3A1A2U2
PAHZZ	5962-318-2224	INTEGRATED CIRCUIT: N7410A (18324)	EA	1			*	*	5	A3A1A2U3
PAHZZ	5962-318-2223	INTEGRATED CIRCUIT: N7400A (18324)	EA	4			*	*	5	A3A1A2U4
PAHZZ	6625-432-1460	PRINTED CIRCUIT BOARD: 34-47 (03626)	EA	1			*	*	5	A3A1A2PC1
PAHZZ	6625-013-7688	BUFFER AMPLIFIER: 34-34 (03626)	EA	1			*	*	5	A3A1A2U5
PAHZZ	6625-432-1461	ATTENUATOR, FIXED: 34-55 (03626)	EA	1			*	*	5	A3A1A2U6
PAHZZ	5945-455-2221	RELAY, ARMATURE: 5005-007 (03626)	EA	2			*	*	5	A3A1A2K1,2
PAHZZ	5905-833-6247	RESISTOR, FIXED COMPOSITION: RER07C202GM (81349)	EA	25			*	*	5	A3A1A2R3,6,9, 17,18,21,29

SECTION V REPAIR PARTS FOR DIRECT SUPPORT, GENERAL SUPPORT, AND DEPOT MAINTENANCE (CONTINUED)													
(1)	(2)	(3)	(4)	(5)	(6)	(7)			(8)	(9)	(10)		
SMR	FEDERAL	DESCRIPTION	UNIT	QTY	30-DAY DS	30-DAY GS			1 YR	DEPOT	(a)	(b)	
CODE	STOCK		OF	INC	ALLOWANCE	ALLOWANCE	ALLOWANCE	EQUIP	ALW	MAINT	FIG	ITEM	
NUMBER	NUMBER		MEAS	IN	(a)	(b)	(c)	CNTG	PER	100	NO.	NO. OR	
				UNIT	1-20	21-50	51-100	100	100	PER		REFERENCE	
			USABLE					PER	PER			DESIGNATION	
			ON					CNTG	EQUIP				
			CODE										
PAHZZ	5905-833-6498	REFERENCE NUMBER & MFR. CODE RESISTOR, FIXED, COMPOSITION RLR07C333GM (81349)	EA	22				*	*	*	*	5	A3A1A2R12TOR
PAHZZ	5905-403-8840	RESISTOR, FIXED, COMPOSITION RLR07C301GM (81349)	EA	2				*	*	*	*	5	A3A1A2R19,20
PAHZZ	5905-833-6444	RESISTOR, FIXED, COMPOSITION RLR07C103GM (81349)	EA	11				*	*	*	*	5	A3A1A2R22,23
PAHZZ	5905-835-3909	RESISTOR, FIXED COMPOSITION RLR07C203GM (81349)	EA	3				*	*	*	*	5	A3A1A2R25,26
PAHZZ	5905-833-6513	RESISTOR, FIXED COMPOSITION RLR07C512GM (81349)	EA	17				*	*	*	*	5	A3A1A2R28
PAHZZ	5905-889-0293	RESISTOR, FIXED, FILM: RN70B9093F (81349)	EA	1				*	*	*	*	5	A3A1A2R8
PAHZZ	5905-434-2975	RESISTOR, VARIABLE: 89XR500 (73138)	EA	1				*	*	*	*	5	A3A1A2R5
PAHZZ	5905-434-2967	RESISTOR, VARIABLE: 89XR5K (73138)	EA	1				*	*	*	*	5	A3A1A2R4
PAHZZ	5905-434-2950	RESISTOR, VARIABLE: 89XR100K (73138)	EA	3				*	*	*	*	5	A3A1A2R1,7
PAHZZ	5961-882-2916	SEMICONDUCTOR DEVICE, DIODE: 5003-002 (03626)	EA	11				*	*	*	*	5	A3A1A2CR1T0C
PAHZZ	5961-519-6178	SEMICONDUCTOR DEVICE, DIODE: IN458 (81349)	EA	2				*	*	*	*	5	A3A1A2CR6,7
PAHZZ	5935-134-1417	SOCKET, IC: MW3014B1 (16950)	EA	15				*	*	*	*		A3A1A2X2,3,4
PAHZZ	5935-134-1418	SOCKET, IC: MW3016B1 (16950)	EA	12				*	*	*	*		A3A1A2X1
PAHZZ	5975-027-4598	CLAMP, CABLE: PLC1M54 (06383)	EA	16				*	*	*	*	5	A3A1A2MP5
PAHZZ	5310-934-9739	NUT, PLAIN, HEXAGON: MS35649-242 (96906)	EA	REF				*	*	*	*	5	A3A1A2MP5H1
PAHZZ	5305-829-1419	SCREW, MACHINE: MS2469358 (96906)	EA	16				*	*	*	*	5	A3A1A2MP5H1
PAHZZ	5365-111-2180	SPACER, SLEEVE: 5349 (08863)	EA	16				*	*	*	*	5	A3A1A2MP5H1
PAHZZ	5310-782-1349	WASHER, FLAT: MS15795-804 (96906)	EA	16				*	*	*	*	5	A3A1A2MP5H1
PAHZZ	5310-543-2410	WASHER, SPLIT MS35338-40 (96906)	EA	16				*	*	*	*	5	A3A1A2MP5H1
PAHZZ	5930-426-7491	SWITCH, PUSH: 34-22 (03626)	EA	1				*	*	*	*	5	A3A1A2S5-7
PAHZZ	5961-069-1027	TRANSIPAD: 10160 (07047)	EA	26				*	*	*	*	5	A3A1A2XQ1
PAHZZ	5961-929-2857	TRANSISTOR: 2N3645 (81349)	EA	9				*	*	*	*	5	A3A1A2Q1,6
PAHZZ	5961-491-1431	TRANSISTOR: 2N3569 (81349)	EA	12				*	*	*	*	5	A3A1A2Q2,3,4
PAHZZ	6145-578-3243	WIRE, ELECTRICAL: NO22AWG (81349)	FT	2				*	*	*	*	5	A3A1A2W2
ADDDD		CIRCUIT CARD ASSEMBLY: 34-44 (03626)	EA	1								4	A3A1A3
PAHZZ	6625-432-1459	BRACKET, MOUNTING: 34-51 (03626)	EA	REF				REF	REF	REF	REF	8	A3A1A3MP1,2
PAHZZ	5305-889-3116	SCREW, MACHINE: MS35206-213 (96906)	EA	REF				REF	REF	REF	REF	8	A3A1A3MP1H2
PAHZZ	5310-543-2410	WASHER, SPLIT: MS35338-40 (96906)	EA	REF				REF	REF	REF	REF	8	A3A1A3MP1H4

SECTION V REPAIR PARTS FOR DIRECT SUPPORT, GENERAL SUPPORT, AND DEPOT MAINTENANCE (CONTINUED)													
(1)	(2)	(3)	(4)	(5)	(6)	(7)			(8)	(9)	(10)		
SMR	FEDERAL	DESCRIPTION	UNIT	QTY	30-DAY DS	30-DAY GS			1 YR	DEPOT	(a)	(b)	
CODE	STOCK		OF	INC	ALLOWANCE	ALLOWANCE	ALLOWANCE	ALLOWANCE	ALW	MAINT	FIG	ITEM	
NUMBER	NUMBER		MEAS	IN	(a)	(b)	(c)	(a)	(b)	(c)	100	NO.	
			USABLE	UNIT	1-20	21-50	51-100	1-20	21-50	51-100	PER	OR	
			ON								EQUIP	REFERENCE	
			CODE								CNTGNCY	DESIGNATION	
PAHZZ	6145-080-4383	REFERENCE NUMBER & MFR. CODE CABLE, RADIO FREQUENCY: RG188AU (81349)	FT	3				*	*	*	*	8	A3A1A3W1
PAHZZ	5910-434-2977	CAPACITOR, FIXED, ELECTROLYTIC: ET102X010A01 (73445)	EA	4				*	*	*	*	6	A3A1A3C1, 2, 3
PAHZZ	5910-689-1393	CAPACITOR, FIXED, ELECTROLYTIC: 2222-023-90011 (73445)	EA	2				*	*	*	*	6	A3A1A3C5, 6
PAHZZ	5910-134-1320	CAPACITOR, FIXED, ELECTROLYTIC: T362B476K006A5 (73445)	EA	1				*	*	*	*	7	A3A1A3C7
PAHZZ	5910-134-1321	CAPACITOR, FIXED, ELECTROLYTIC: T362B106K025AS (73445)	EA	7				*	*	*	*	6	A3A1A3C8, 13
PAHZZ	5910-134-1321	CAPACITOR, FIXED, ELECTROLYTIC: T362B106K025AS (73445)	EA	REF				*	*	*	*	6	A3A1A3C9T0C
PAHZZ	5910-134-1427	CAPACITOR, FIXED, ELECTROLYTIC: T362B475K050A5 (73445)	EA	4				*	*	*	*	6	A3A1A3C9T0C
PAHZZ	5910-847-7288	CAPACITOR, FIXED, MICA DIELECTRIC: CK06BX103K (81349)	EA	2				*	*	*	*	12	A3A1A3C15, 16
PAHZZ	5910-351-0436	CAPACITOR, FIXED, MICA DIELECTRIC: 5002-010 (03626)	EA	4				*	*	*	*	7	A3A1A3C17, 18
PAHZZ	5910-893-6747	CAPACITOR, FIXED, MICA DIELECTRIC: CK05BX680K (81349)	EA	1				*	*	*	*	7	A3A1A3C20
PAHZZ	5910-978-7690	CAPACITOR, FIXED, MICA DIELECTRIC: CK05BX471K (81349)	EA	3				*	*	*	*	7	A3A1A3C22, 21
PAHZZ	5910-766-8793	CAPACITOR, FIXED, MICA DIELECTRIC: CM15FD131G03 (81349)	EA	2				*	*	*	*	12	A3A1A3C27, 28
PAHZZ	5935-959-2601	CONNECTOR, RECEPTACLE, ELECTRICAL: 225-22221-205 (02660)	EA	1				*	*	*	*	8	A3A1A3J1
PAHZZ	5999-121-2034	HEATSINK: 6166B (13103)	EA	1				*	*	*	*	6	A3A1A3MP3
PAHZZ	5310-631-1294	NUT, PLAIN, HEXAGON: MS671-6 (80205)	EA	REF				REF	REF	REF	REF	6	A3A1A3MP3H2
PAHZZ	5305-582-5807	SCREW, MACHINE MS35265-28 (96906)	EA	2				*	*	*	*	6	A3A1A3MP3H2
PAHZZ	5310-045-4007	WASHER, SPLIT: MS35338-41 (96906)	EA	REF				REF	REF	REF	REF	6	A3A1A3MP3H2
PAHZZ	5962-318-2223	INTEGRATED CIRCUIT: N7400A (18324)	EA	REF				REF	REF	REF	REF	6	A3A1A3U1, 3, 4
PAHZZ	5962-066-0171	INTEGRATED CIRCUIT: MC846P (04713)	EA	1				*	*	*	*	6	A3A1A3U2
PAHZZ	5962-789-3359	INTEGRATED CIRCUIT: MC830P (04713)	EA	1				*	*	*	*	6	A3A1A3U5
PAHZZ	5962-455-3459	INTEGRATED CIRCUIT: N7473A (18324)	EA	1				*	*	*	*	6	A3A1A3U6
PAHZZ	5962-102-7519	INTEGRATED CIRCUIT: N7490A (18324)	EA	5				*	*	*	*	6	A3A1A3U7T0U
PAHZZ	5962-238-3123	INTEGRATED CIRCUIT: N7475B (18324)	EA	5				*	*	*	*	6	A3A1A3U12T0U
PAHZZ	5962-484-2353	INTEGRATED CIRCUIT: N7441B (18324)	EA	6				*	*	*	*	6	A3A1A3U17T0U
PAHZZ	5962-256-0344	INTEGRATED CIRCUIT: N7420A (18324)	EA	1				*	*	*	*	6	A3A1A3U23
PAHZZ	6625-275-1775	INTEGRATED CIRCUIT: 34-25 (03626)	EA	1				*	*	*	*	6	A3A1A3U24
PAHZZ	6625-273-0789	INTEGRATED CIRCUIT: 34-28 (03626)	EA	1				*	*	*	*	6	A3A1A3U25
PAHZZ	6625-273-0792	INTEGRATED CIRCUIT: 34-31 (03626)	EA	1				*	*	*	*	6	A3A1A3U26

(1) SMR CODE	(2) FEDERAL STOCK NUMBER	(3) DESCRIPTION	(CONTINUED)										(10) ILLUSTRATIONS (a) FIG NO.
			(4) UNIT OF MEAS	(5) QTY INC UNIT	(6) 30-DAY DS MAINT ALLOWANCE			(7) 30-DAY GS MAINT ALLOWANCE			(8) 1 YR ALW PER EQUIP CNTGNCY	(9) DEPOT MAINT ALW PER 100 EQUIP	
					(a) 1-20	(b) 21-50	(c) 51-100	(a) 1-20	(b) 21-50	(c) 51-100			
PAHZZ	5935-134-1422	REFERENCE NUMBER & MFR. CODE CONNECTOR ASSEMBLY: 34-78 (03626)	EA	1		*	*	*	*	*	8	A3A1A3A1	
PAHZZ	6625-134-1425	PRINTED CIRCUIT BOARD: 34-43 (03626)	EA	1		*	*	*	*	*	8	A3A1A3A1PC1	
PAHZZ	5905-471-4613	RESISTOR, FIXED, COMPOSITION: RLR20C4K7GR (81349)	EA	2		*	*	*	*	*	7	A3A1A3R1,87	
PAHZZ	5905-345-7640	RESISTOR, FIXED, COMPOSITION RLR07C101GM (81349)	EA	1		*	*	*	*	*	12	A3A1A3R4	
PAHZZ	5905-833-6266	RESISTOR, FIXED COMPOSITION: RLR07C511GM (81349)	EA	1		*	*	*	*	*	7	A3A1A3R5	
PAHZZ	5905-926-8612	RESISTOR, FIXED COMPOSITION: RLR07C102GM (81349)	EA	2		*	*	*	*	*	7	A3A1A3R9, A3A1A3R8	
PAHZZ	5905-833-6247	RESISTOR, FIXED COMPOSITION: RLR07C202GM (81349)	EA	REF		REF	REF	REF	REF	REF	7	A3A1A3R7,R10T01 R17 TO R21,R88 A3A1A3R16,R22,1	
PAHZZ	5905-833-6272	RESISTOR, FIXED COMPOSITION: RLR07C513GM (81349)	EA	4		*	*	*	*	*	7	A3A1A3R28,R101 A3A1A3R102,R10:	
PAHZZ	5905-833-6513	RESISTOR, FIXED COMPOSITION: RLR07C512GM (81349)	EA	REF		REF	REF	REF	REF	REF	7	A3A1A3R29,R30,1 R35,R36,R42,R4:	
PAHZZ	5905-833-6444	RESISTOR, FIXED COMPOSITION: RLR07C103GM (81349)	EA	REF		REF	REF	REF	REF	REF	7	A3A1A3R46 TO R: 54,56,104	
PAHZZ	5905-833-6473	RESISTOR, FIXED COMPOSITION: RLR07C153GM (81349)	EA	9		*	*	*	*	*	7,12	A3A1A3R45,57,5: 90 TO 94	
PAHZZ	5905-835-3909	RESISTOR, FIXED COMPOSITION: RLR07C203GM (81349)	EA	REF		REF	REF	REF	REF	REF	7	A3A1A3R62	
PAHZZ	5905-247-2250	RESISTOR, FIXED COMPOSITION: RLR07C273GM (81349)	EA	3		*	*	*	*	*	7	A3A1A3R63,64,6:	
PAHZZ	5905-833-6498	RESISTOR, FIXED COMPOSITION: RLR07C333GM (81349)	EA	REF		REF	REF	REF	REF	REF	7,12	A3A1A3R27,66 T: 95 TO 100	
PAHZZ	5905-835-3844	RESISTOR, FIXED COMPOSITION: RLR07C104GM (81349)	EA	7		*	*	*	*	*	7,12	A3A1A3R77 TO 8: 84,85	
PAHZZ	5905-345-7650	RESISTOR, FIXED COMPOSITION: RLR07C391GM (81349)	EA	2		*	*	*	*	*	7	A3A1A3R105,106	
PAHZZ	5905-914-9230	RESISTOR, FIXED COMPOSITION: RLR205101GR (81349)	EA	1		*	*	*	*	*	7	A3A1A3R82	
PAHZZ	5905-432-0468	RESISTOR, FIXED, FILM: RNC60K3923FS (81349)	EA	1		*	*	*	*	*	7	A3A1A3R86	
PAHZZ	5905-434-2950	RESISTOR, VARIABLE: 89XR100K (73138)	EA	REF		REF	REF	REF	REF	REF	7	A3A1A3R6	
PAHZZ	5905-442-6400	RESISTOR, VARIABLE: 89XR100 (73138)	EA	2		*	*	*	*	*	8	A3A1A3R2,3	
PAHZZ	5905-997-2212	RESISTOR, FIXED, WIREWOUND: RW7904991F (81349)	EA	1		*	*	*	*	*	7	A3A1A3R81	
PAHZZ	5961-465-4405	SEMICONDUCTOR DEVICE, D10DE: IN4005 (04713)	EA	9		*	*	*	*	*	7	A3A1A3CR1 TO 9	
PAHZZ	5961-935-1135	SEMICONDUCTOR DEVICE, D10DE: IN4148 (81349)	EA	7		*	*	*	*	*	7	A3A1A3CR11,12	
PAHZZ	5961-882-2916	SEMICONDUCTOR DEVICE, D10DE: 5003-002 (03626)	EA	REF		REF	REF	REF	REF	REF	7,12	A3A1A3CR13 TO	
PAHZZ	5961-458-8787	SEMICONDUCTOR DEVICE, D10DE: IN4735 (04713)	EA	1		*	*	*	*	*	7	A3A1A3CR19	
PAHZZ	5935-134-1424	SOCKET,ELECTRON TUBE: 55702 (02660)	EA	6		*	*	*	*	*	8	A3A1A3XV1 TO 6	
PAHZZ	5935-134-1418	SOCKET, I C: MW3016B1 (16950)	EA	REF		REF	REF	REF	REF	REF	8	A3A1A3X7 TO 17	
PAHZZ	5935-134-1417	SOCKET, I C: MW3014B1 (16950)	EA	REF		REF	REF	REF	REF	REF	8	A3A1A3X18 TO 2:	

SECTION V REPAIR PARTS FOR DIRECT SUPPORT, GENERAL SUPPORT, AND DEPOT MAINTENANCE (CONTINUED)														
(1)	(2)	(3)	(4)	(5)	(6)	(7)			(8)		(9)	(10)		
SMR	FEDERAL	DESCRIPTION	UNIT	QTY	30-DAY DS MAINT	30-DAY GS MAINT			1 YR	DEPOT	ILLUSTRATIONS			
CODE	STOCK		OF	INC	ALLOWANCE	ALLOWANCE	ALLOWANCE	ALLOWANCE	ALW	MAINT	(a)	(b)	OR	
NUMBER	NUMBER	REFERENCE NUMBER & MFR. CODE	MEAS	LN	(a)	(b)	(c)	(a)	(b)	(c)	PER	PER	FIG	ITEM NO. OR
			USABLE ON		1-20	21-50	51-100	1-20	21-50	51-100	EQUIP	100	NO.	REFERENCE
			CODE								CNTG	EQUIP		DESIGNATION
PAHZZ	5935-063-8248	REFIN, STRAIGHT: 380598-2 (00779)	EA	REF				REF	REF	REF	REF	REF	6	A3A1A3MP4
PAHZZ	5975-027-4598	CLAMP, CABLE: PLCLM54 (06383)	EA	REF				REF	REF	REF	REF	REF	8	A3A1A3MP5
PAHZZ	5310-934-9739	NUT, PLAIN HEXAGON MS35649-242 (96906)	EA	REF				REF	REF	REF	REF	REF	8	A3A1A3MP5H1
PAHZZ	5305-829-1419	SCREW, MACHINE: MS2469358 (96906)	EA	REF				REF	REF	REF	REF	REF	8	A3A1A3MP5H1
PAHZZ	5365-111-2180	SPACER, SLEEVE: 5349 (08863)	EA	REF				REF	REF	REF	REF	REF	8	A3A1A3MP5H1
PAHZZ	5310-782-1349	WASHER, FLAT: MS15795-804 (96906)	EA	REF				REF	REF	REF	REF	REF	8	A3A1A3MP5H1
PAHZZ	5310-543-2410	WASHER, SPLIT: MS35338-40 (96906)	EA	REF				REF	REF	REF	REF	REF	8	A3A1A3MP5H1
PAHZZ	5930-134-1312	SWITCH, PUSH: 34-84 (03626)	EA	1				*	*	*	*	*	8	A3A1A3S1-3
PAHZZ	5930-134-1311	SWITCH, PUSH: 34-85 (03626)	EA	1				*	*	*	*	*	8	A3A1A3S4
PAHZZ	5961-069-1027	TRANSIPAD: 10160 (07047)	EA	REF				REF	REF	REF	REF	REF	6	A3A1A3XQ1
PAHZZ	5961-929-2857	TRANSISTOR: 2N3645 (81349)	EA	REF				REF	REF	REF	REF	REF	6	A3A1A3Q1 TO 22
PAHZZ	5961-491-1431	TRANSISTOR: 2N3569 (81349)	EA	REF				REF	REF	REF	REF	REF	6	A3A1A3Q6, 7, 12, 13, 24
PAHZZ	5961-896-8706	TRANSISTOR: 2N3904 (04713_)	EA	6				*	*	*	*	*	6	A3A1A3Q14, 15, 19, 20
PAHZZ	5961-853-2601	TRANSISTOR: 2N1893 (01281)	EA	5				*	*	*	*	*	6	A3A1A3Q25, 26
PAHZZ	5961-092-0128	TRANSISTOR: 2N3906 (27014)	EA	3				*	*	*	*	*	6	A3A1A3Q26, 27
PAHZZ	5961-162-1819	TRANSISTOR TIP32A (01295)	EA	2				*	*	*	*	*	6	A3A1A3Q33, 34
PAHZZ	5961-350-8230	TRANSISTOR: TIP31A (01295)	EA	1				*	*	*	*	*	6	A3A1A3Q35
PAHZZ	5961-134-1310	TRANSISTOR: SE1010 (07263)	EA	2				*	*	*	*	*	6	A3A1A3Q36, 37
PAHZZ	6625-432-1463	BLOCK, INDICATOR: 34-63-1 (03626)	EA	1				*	*	*	*	*	9	A3A1MP7
PAHZZ	6625-432-1464	BLOCK, INDICATOR: 34-63-2 (03626)	EA	1				*	*	*	*	*	9	A3A1MP8
PAHZZ	6625-432-1465	BLOCK, INDICATOR: 34-63-3 (03626)	EA	1				*	*	*	*	*	9	A3A1MP9
PAHZZ	6625-432-1466	BRACKET, INDICATOR: 34-29 (03626)	EA	1				*	*	*	*	*	9	A3A1MP10
PAHZZ	5305-993-0190	SCREW, MACHINE: MS35206-214 (96906)	EA	REF				REF	REF	REF	REF	REF	9	A3A1MP10H2
PAHZZ	5310-543-2410	WASHER, SPLIT: MS35338-40 (96906)	EA	REF				REF	REF	REF	REF	REF	9	A3A1MP10H2
PAOZZ	5960-137-4750	ELECTRON TUBE: ZM1000 (73445)	EA	6				*	*	*	*	*	6	A3A1V1T06
PAOZZ	6210-137-2454	INDICATOR, LAMP: CM26-3-05-19 (71744)	EA					*	*	*	*	*	9	A3A1DS1, 2, 3
PAHZZ	5310-192-5586	SWITCH, TOGGLE: MS27717-23 (96906)	EA	1				*	*	*	*	*	4	A3A1S8
PAHZZ	6625-142-3477	ROD, STRAIGHT 34-82 (03626)	EA	1				*	*	*	*	*	4	A3A1MP14

SECTION V REPAIR PARTS FOR DIRECT SUPPORT, GENERAL SUPPORT, AND DEPOT MAINTENANCE (CONTINUED)															
(1)	(2)	(3)	(4)	(5)	(6)			(7)			(8)	(9)	(10)		
SMR	FEDERAL	DESCRIPTION	UNIT	QTY	30-DAY DS MAINT			30-DAY GS MAINT			1 YR	DEPOT	ILLUSTRATIONS		
CODE	STOCK		OF	INC	IN	ALLOWANCE	ALLOWANCE	ALLOWANCE	ALW	PER	ALW	PER	FIG	(a)	(b)
NUMBER			MEAS	UNIT	(a)	(b)	(c)	(a)	(b)	(c)	PER	100	NO.	NO.	OR
			USABLE		1-20	21-50	51-100	1-20	21-50	51-100	CNTG	EQUIP			REFERENCE
			ON								CY				DESIGNATION
			CODE												
PAHZZ	6145-519-0116	REFERENCE NUMBER & MFR. CODE WIRE, ELECTRICAL: N024AWG (71002)		FT	2				*	*	*	*	*	4	A3A1W1
PAHZZ	6625-432-1471	PLATE, FRONT: 34-40 (03626)		EA	1				*	*	*	*	*	4	A3A1MP15
PAHZZ	5305-984-4983	SCREW, MACHINE: MS35206-226 (96906)		EA	4				*	*	*	*	*	4	A3A1MP15H4
PAHZZ	5310-045-4007	WASHER, SPLIT: MS35338-41 (96906)		EA	REF				REF	REF	REF	REF	REF	4	A3A1MP15H4
PAHZZ	6625-432-1472	FRAME, VOLTMETER: 34-36 (03626)		EA	1				*	*	*	*	*	4	A3A1MP16
PAHZZ	9905-134-1316	PLATE, IDENTIFICATION: 2012-65 (03626)		EA	1				*	*	*	*	*	3	A3A1MP12
PAHZZ	9905-134-1318	PLATE, IDENTIFICATION: 2012-66 (03626)		EA	1				*	*	*	*	*	3	A3A1MP13

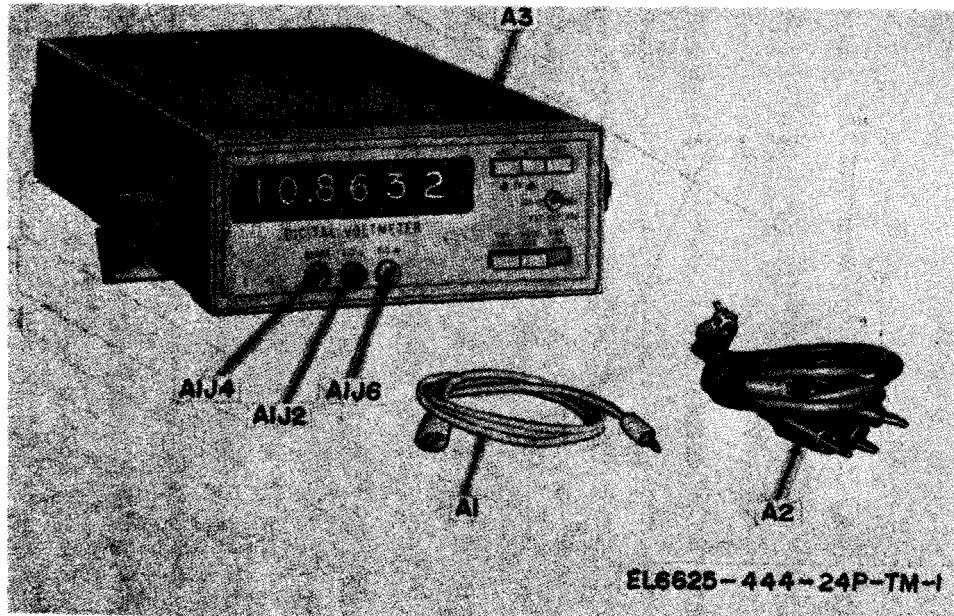
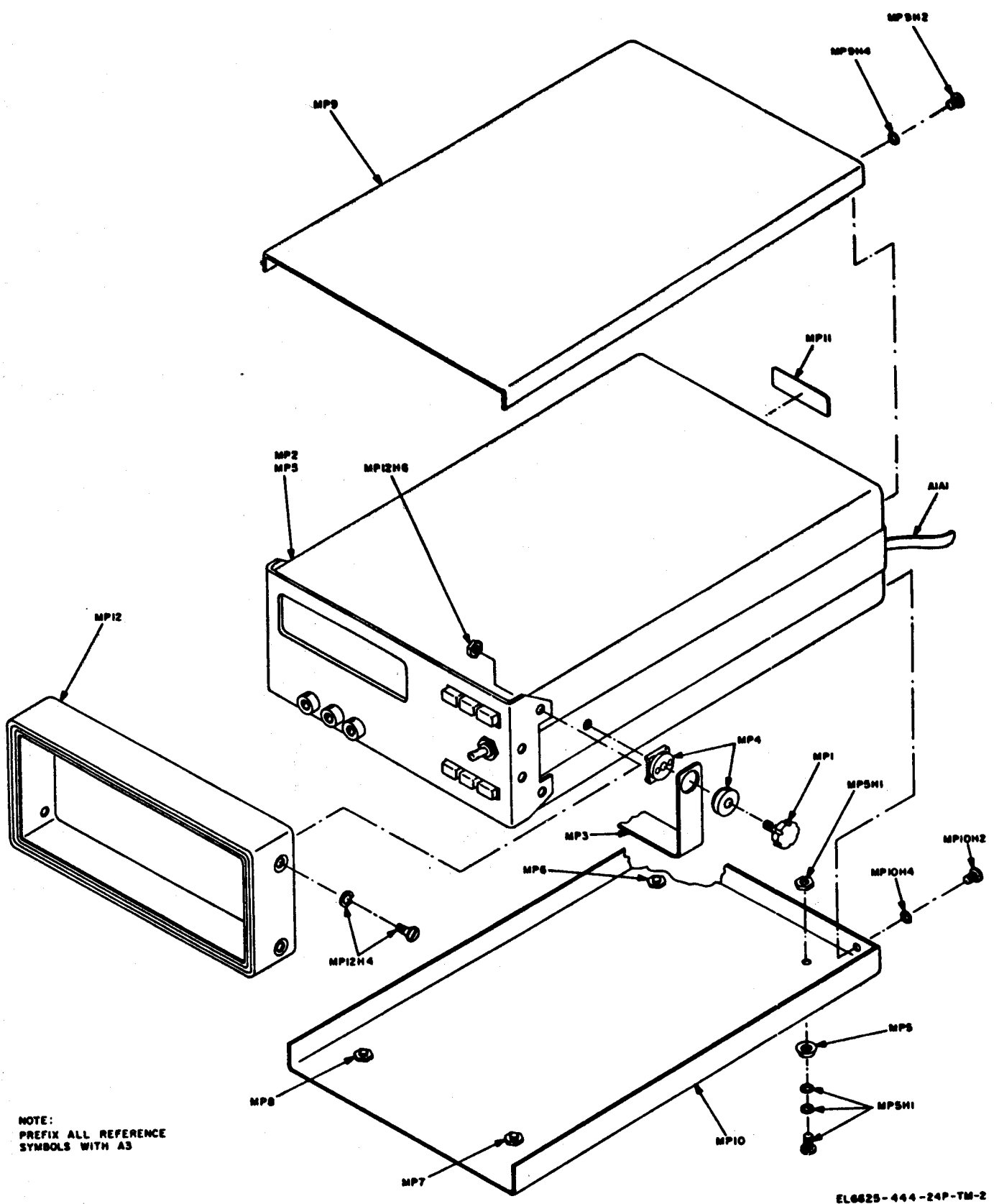


Figure 1. Digital Voltmeter AN/GSM-64A.



NOTE:
PREFIX ALL REFERENCE
SYMBOLS WITH A3

Figure 2. Digital voltmeter

EL6625-444-24P-TM-2

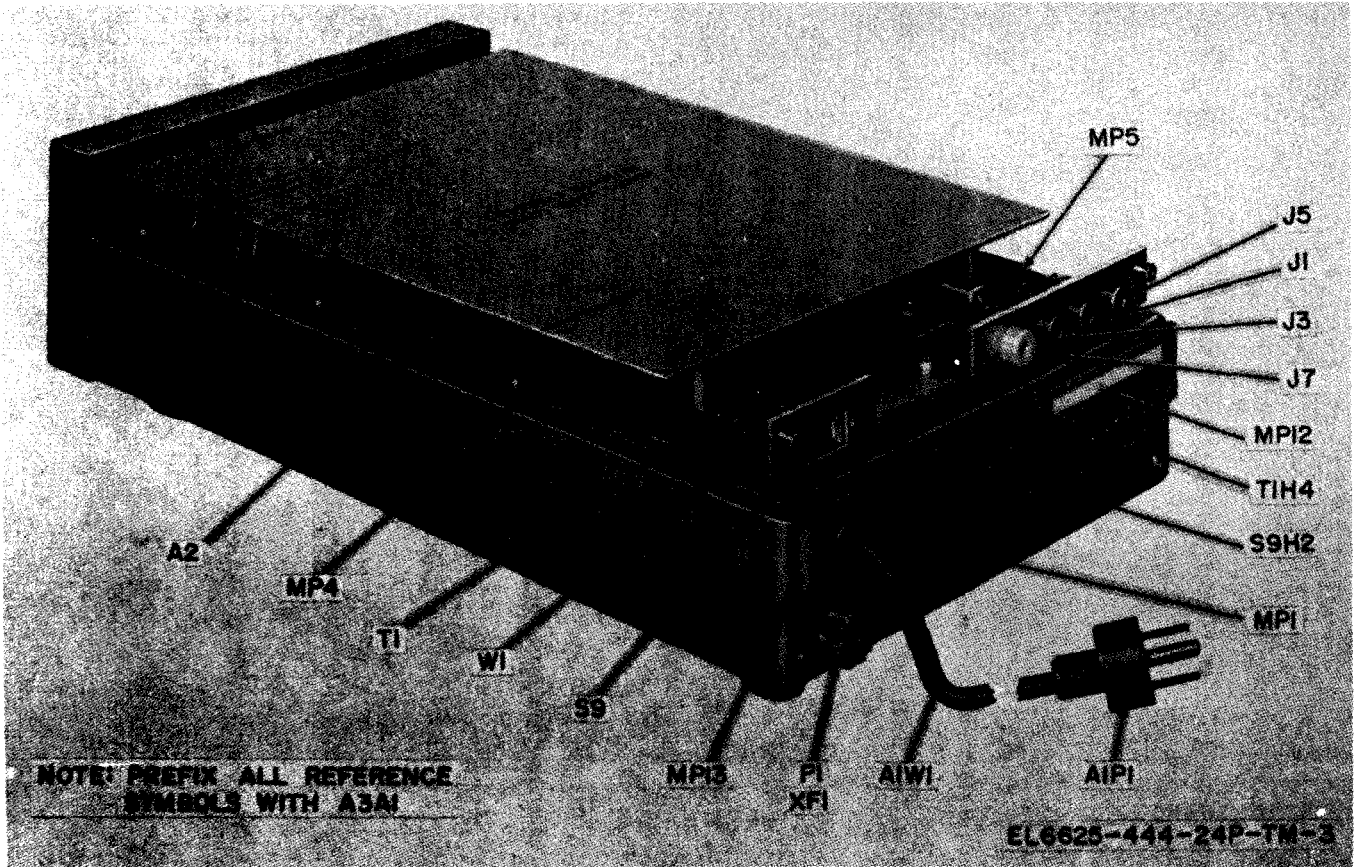


Figure 3. Voltmeter subassembly

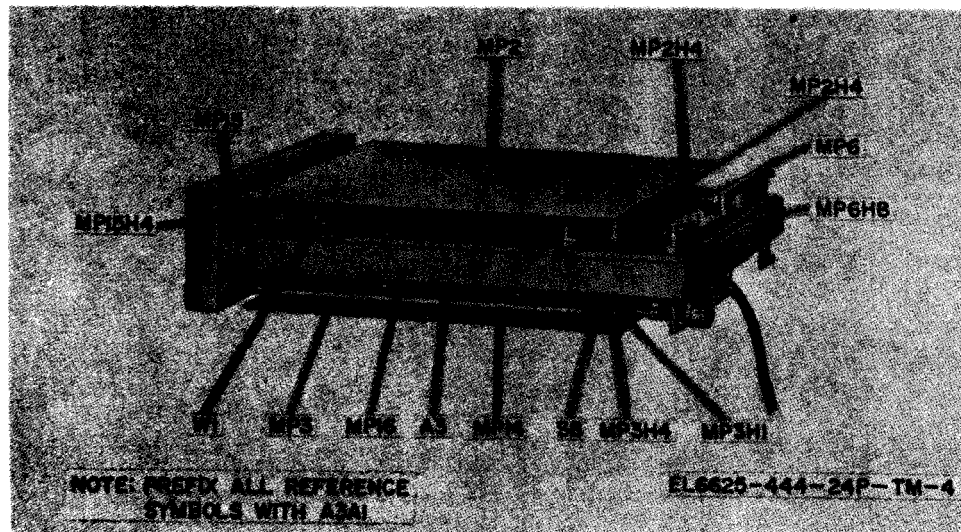


Figure 4. Shields and plates

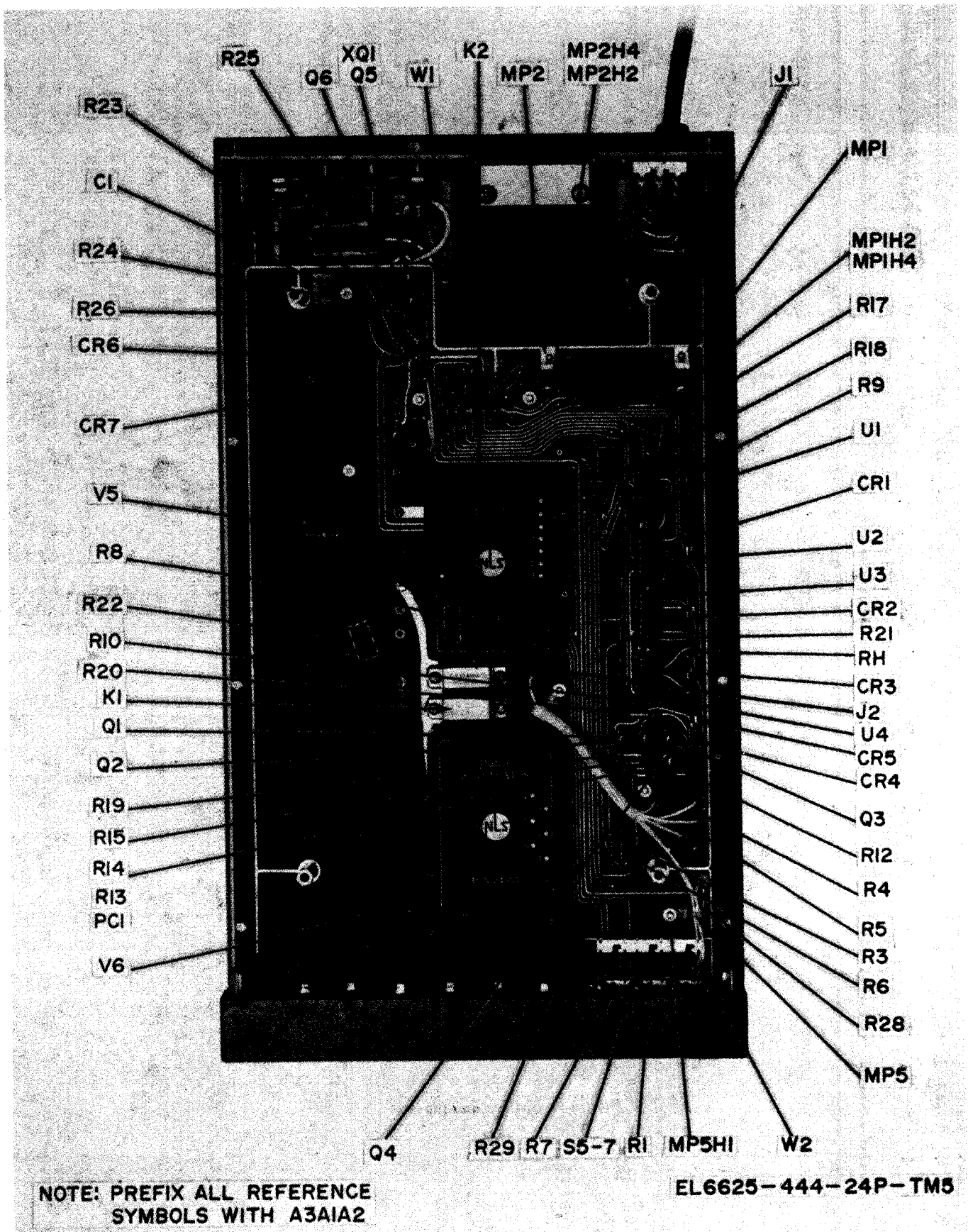


Figure 5. Signal conditioner assembly A2.

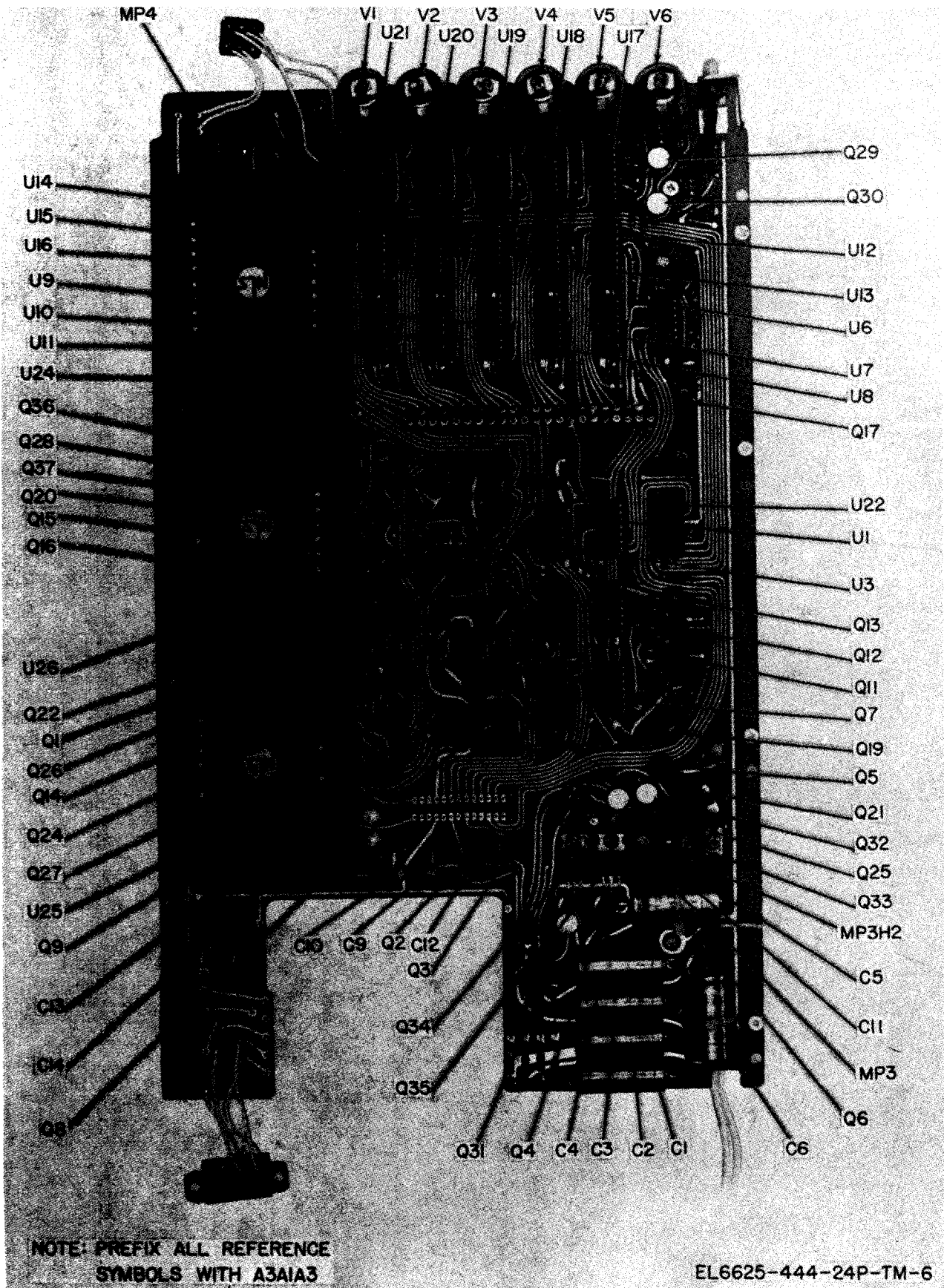


Figure 6. Main board assembly A3.

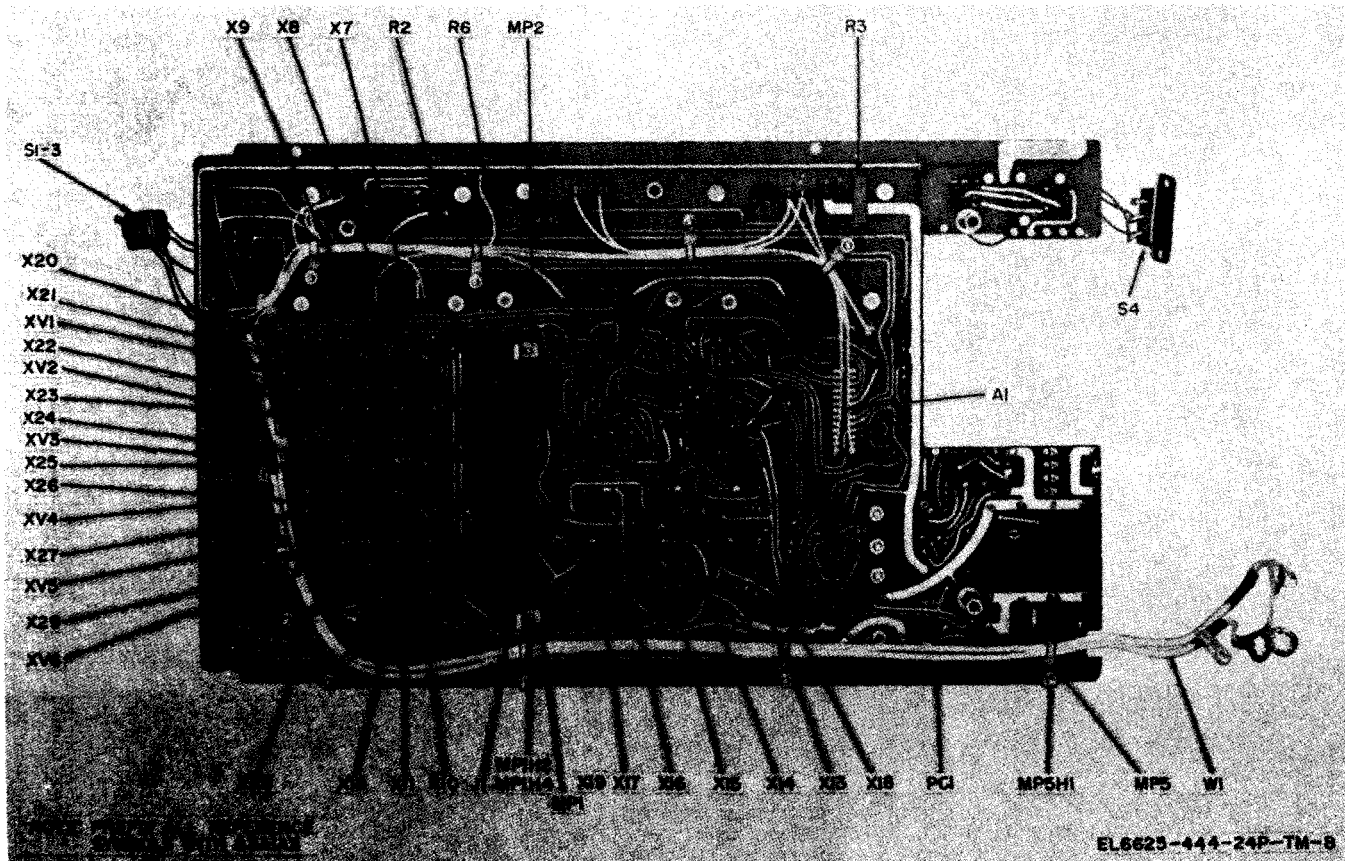
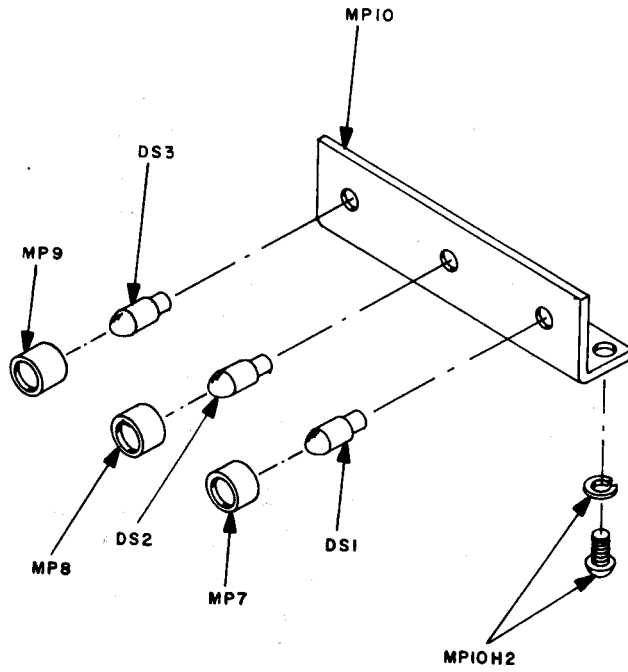


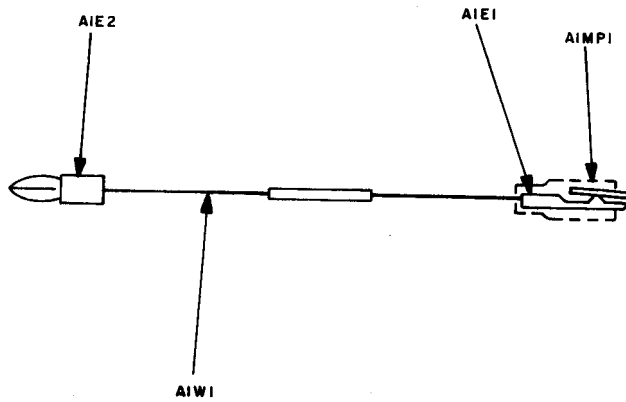
Figure 8. Main board assembly, bottom view.



NOTE:
PREFIX ALL REFERENCE
SYMBOLS WITH A3AI

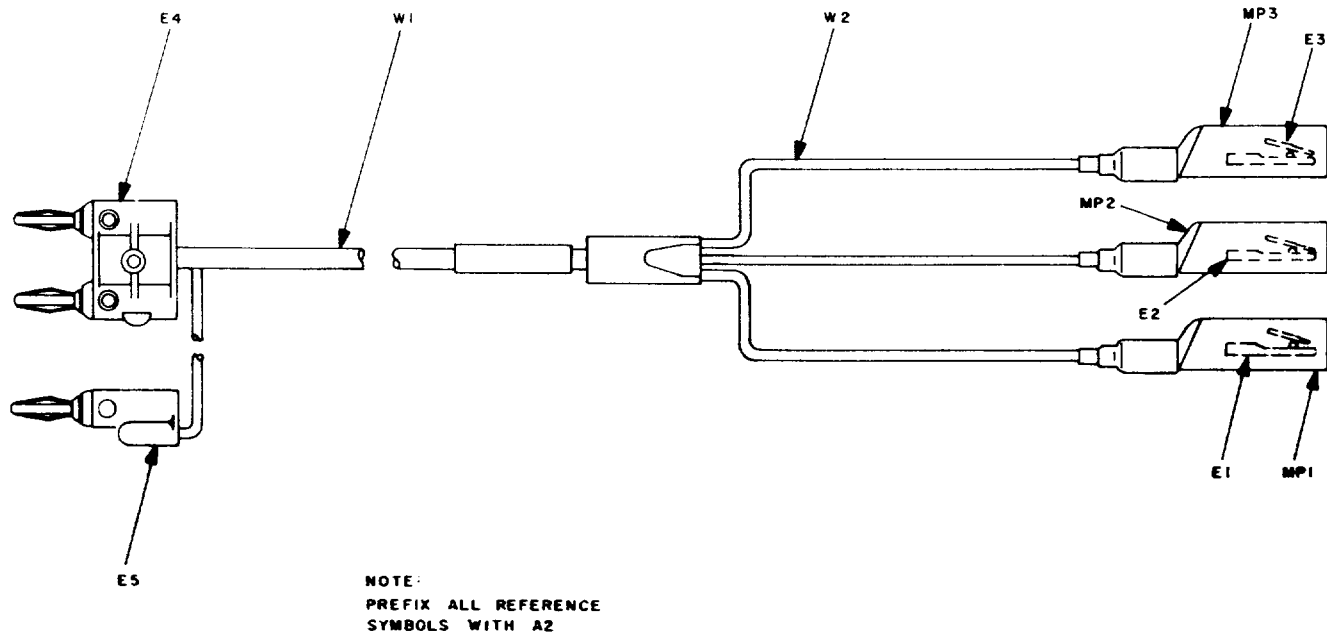
EL6625-444-24P-TM-9

Figure 9. Lamp assembly.



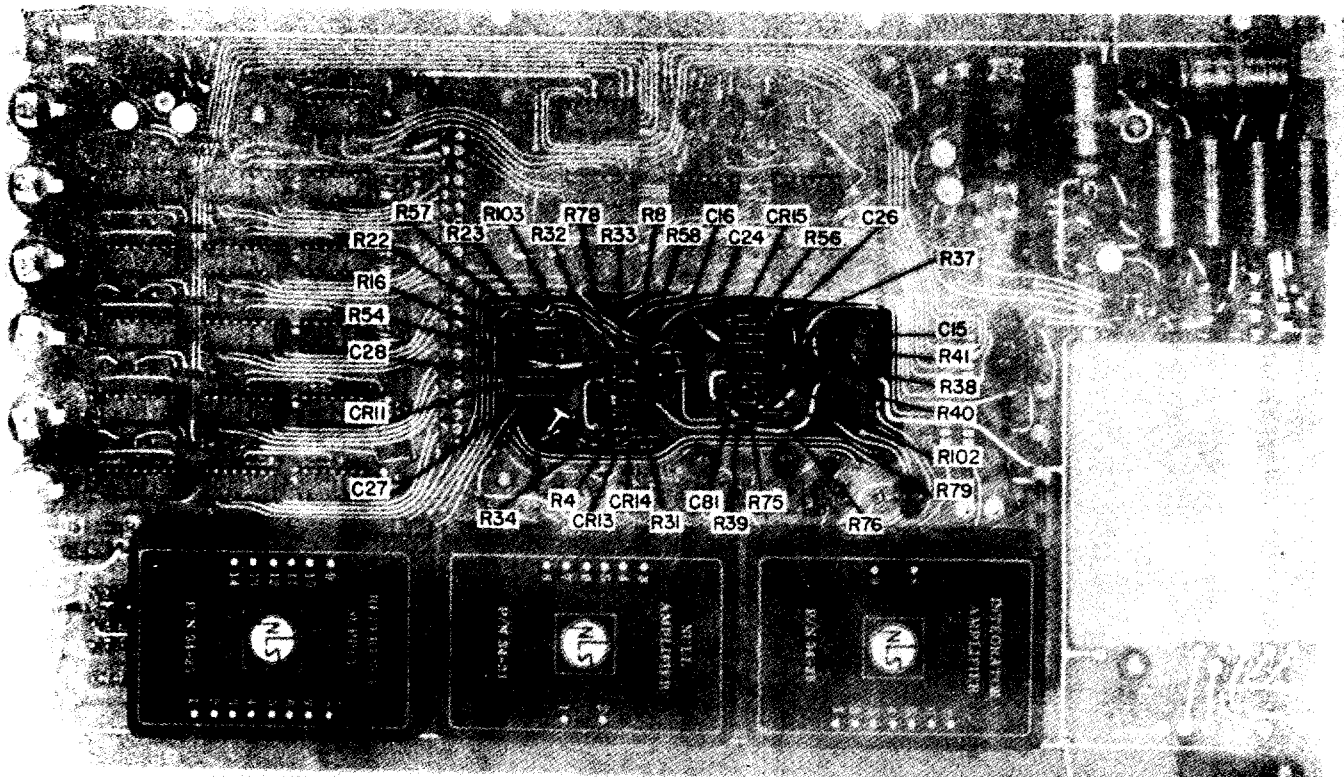
EL6625-444-24P-TM-10

Figure 10. Test lead A1



EL6625-444-24-TM-II

Figure 11. Test lead set



NOTE: PREFIX ALL REFERENCE
SYMBOLS WITH A3A1A3

EL6625-444-24P-TM-I2

Figure 12. Main board assembly A3.

SECTION III. INDEX-FEDERAL STOCK NUMBER AND REFERENCE NUMBER CROSS REFERENCE TO FIGURE AND ITEM NUMBER OR REFERENCE DESIGNATION

FEDERAL STOCK NUMBER	FIGURE NUMBER	ITEM NUMBER OR REF. DESIGNATION	FEDERAL STOCK NUMBER	FIGURE NUMBER	ITEM NUMBER OR REF. DESIGNATION
5305-051-6521	4	A3A1MP2H4	5310-782-1349	8	A3A1A3MP5H1
5305-051-6521	4	A3A1MP3H4	5310-934-9739	3	A3A1S9H2
5305-582-5807	6	A3A1A3MP3H2	5310-934-9739	5	A3A1A2MP5H1
5305-829-1419	5	A3A1A2MP5H1	5310-934-9739	8	A3A1A3MP5H1
5305-829-1419	8	A3A1A3MP5H1	5340-450-5679	2	A3MP3
5305-889-2998	5	A3A1A2MP1H2	5340-452-1237	2	A3MP5
5305-889-3116	5	A3A1A2MP1H2	5340-452-1237	2	A3MP6
5305-889-3116	8	A3A1A3MP1H2	5340-452-1237	2	A3MP7
5305-957-7817	2	A3MP12H4	5340-452-1237	2	A3MP8
5305-984-4983	4	A3A1MP15H4	5355-457-6321	2	A3MP1
5305-984-4983	4	A3A1MP15H4	5355-457-6321	2	A3MP1
5305-984-4984	4	A3A1MP6H8	5355-457-6321	2	A3MP2
5305-984-4989	2	A3MP5H1	5365-111-2180	5	A3A1A2MP5H1
5305-984-4989	2	A3MP9H2	5365-111-2180	8	A3A1A3MP5H1
5305-984-4989	2	A3MP10H2	5365-487-4625	4	A3A1MP2H4
5305-984-6191	3	A3A1T1H4	5365-487-4625	4	A3A1MP3H4
5305-993-0190	3	A3A1S9H2	5905-247-2250	7	A3A1A3R63
5305-993-0190	9	A3A1MP10H2	5905-247-2250	7	A3A1A3R64
5310-045-3299	3	A3A1T1H4	5905-247-2250	7	A3A1A3R65
			5905-345-7640	12	A3A1A3R4
5310-045-4007	2	A3MP5H1	5905-345-7650	7	A3A1A3R105
5310-045-4007	2	A3MP9H2	5905-345-7650	7	A3A1A3R106
5310-045-4007	2	A3MP10H2	5905-403-8840	5	A3A1A2R19
5310-045-4007	2	A3MP12H4	5905-403-8840	5	A3A1A2R20
5310-045-4007	4	A3A1MP15H4	5905-432-0468	7	A3A1A3R86
5310-045-4007	6	A3A1A3MP3H2	5905-434-2950	5	A3A1A2R1
5310-192-5586	4	A3A1S8	5905-434-2950	5	A3A1A2R7
5310-543-2410	3	A3A1S9H2	5905-434-2950	7	A3A1A3R6
5310-543-2410	5	A3A1A2MP1H4	5905-434-2967	5	A3A1A2R4
5310-543-2410	5	A3A1A2MP5H1	5905-434-2975	5	A3A1A2R5
5310-543-2410	8	A3A1A3MP1H4	5905-442-6400	8	A3A1A3R2
5310-543-2410	8	A3A1A3MP5H1	5905-442-6400	8	A3A1A3R3
5310-543-2410	9	A3A1MP10H2	5905-471-4613	7	A3A1A3R1
5310-631-1294	2	A3MP5H1	5905-471-4613	7	A3A1A3R87
5310-631-1294	2	A3MP12H4			
5310-631-1294	6	A3A1A3MP3H2	5905-833-6247	5	A3A1A2R3
5310-722-5998	2	A3MP5H1	5905-833-6247	5	A3A1A2R6
5310-782-1349	5	A3A1A2MP5H1	5905-833-6247	5	A3A1A2R9

SECTION III. INDEX-FEDERAL STOCK NUMBER AND REFERENCE NUMBER CROSS REFERENCE
TO FIGURE AND ITEM NUMBER OR REFERENCE DESIGNATION (CONTINUED)

FEDERAL STOCK NUMBER	FIGURE NUMBER	ITEM NUMBER OR REF. DESIGNATION	FEDERAL STOCK NUMBER	FIGURE NUMBER	ITEM NUMBER OR REF. DESIGNATION
5905-833-6247	5	A3A1A2R10	5905-833-6444	12	A3A1A3R54
5905-833-6247	5	A3A1A2R11	5905-833-6444	12	A3A1A3R56
5905-833-6247	5	A3A1A2R17	5905-833-6444	12	A3A1A3R104
5905-833-6247	5	A3A1A2R18	5905-833-6473	7	A3A1A3R45
5905-833-6247	5	A3A1A2R21	5905-833-6473	7	A3A1A3R59
5905-833-6247	5	A3A1A2R29	5905-833-6473	7	A3A1A3R90
5905-833-6247	7	A3A1A3R7	5905-833-6473	7	A3A1A3R91
5905-833-6247	7	A3A1A3R10	5905-833-6473	7	A3A1A3R92
5905-833-6247	7	A3A1A3R11	5905-833-6473	7	A3A1A3R93
5905-833-6247	7	A3A1A3R12	5905-833-6473	7	A3A1A3R94
5905-833-6247	7	A3A1A3R13	5905-833-6473	12	A3A1A3R57
5905-833-6247	7	A3A1A3R14	5905-833-6473	12	A3A1A3R58
5905-833-6247	7	A3A1A3R15	5905-833-6498	5	A3A1A2R12
5905-833-6247	7	A3A1A3R17	5905-833-6498	5	A3A1A2R13
5905-833-6247	7	A3A1A3R18	5905-833-6498	5	A3A1A2R14
5905-833-6247	7	A3A1A3R19	5905-833-6498	5	A3A1A2R15
5905-833-6247	7	A3A1A3R20	5905-833-6498	7	A3A1A3R27
5905-833-6247	7	A3A1A3R21	5905-833-6498	7	A3A1A3R66
5905-833-6247	7	A3A1A3R88	5905-833-6498	7	A3A1A3R67
5905-833-6247	12	A3A1A3R16	5905-833-6498	7	A3A1A3R68
5905-833-6247	12	A3A1A3R22	5905-833-6498	7	A3A1A3R69
5905-833-6247	12	A3A1A3R23	5905-833-6498	7	A3A1A3R70
5905-833-6266	7	A3A1A3R5	5905-833-6498	7	A3A1A3R71
5905-833-6272	7	A3A1A3R28	5905-833-6498	7	A3A1A3R72
5905-833-6272	7	A3A1A3R101	5905-833-6498	7	A3A1A3R73
5905-833-6272	12	A3A1A3R102	5905-833-6498	7	A3A1A3R74
5905-833-6272	12	A3A1A3R103	5905-833-6498	7	A3A1A3R95
5905-833-6444	5	A3A1A2R22	5905-833-6498	7	A3A1A3R96
5905-833-6444	5	A3A1A2R23	5905-833-6498	7	A3A1A3R97
5905-833-6444	5	A3A1A2R24	5905-833-6498	7	A3A1A3R98
5905-833-6444	7	A3A1A3R46	5905-833-6498	7	A3A1A3R99
5905-833-6444	7	A3A1A3R47	5905-833-6498	7	A3A1A3R100
5905-833-6444	7	A3A1A3R48	5905-833-6498	12	A3A1A3R75
5905-833-6444	7	A3A1A3R49	5905-833-6498	12	A3A1A3R76
5905-833-6444	7	A3A1A3R50	5905-833-6513	5	A3A1A2R28

SECTION III. INDEX-FEDERAL STOCK NUMBER AND REFERENCE NUMBER CROSS REFERENCE
TO FIGURE AND ITEM NUMBER OR REFERENCE DESIGNATION (CONTINUED)

FEDERAL STOCK NUMBER	FIGURE NUMBER	ITEM NUMBER OR REF. DESIGNATION	FEDERAL STOCK NUMBER	FIGURE NUMBER	ITEM NUMBER OR REF. DESIGNATION
5905-833-6513	7	A3A1A3R29	5910-134-1321	6	A3A1A3C10
5905-833-6513	7	A3A1A3R30	5910-134-1321	6	A3A1A3C11
5905-833-6513	7	A3A1A3R33	5910-134-1321	6	A3A1A3C12
5905-833-6513	7	A3A1A3R35	5910-134-1321	6	A3A1A3C13
5905-833-6513	7	A3A1A3R36	5910-134-1321	6	A3A1A3C14
5905-833-6513	7	A3A1A3R42	5910-134-1427	6	A3A1A3C9
5905-833-6513	7	A3A1A3R43	5910-134-1427	6	A3A1A3C10
5905-833-6513	7	A3A1A3R44	5910-134-1427	6	A3A1A3C11
5905-833-6513	12	A3A1A3R31	5910-134-1427	6	A3A1A3C12
5905-833-6513	12	A3A1A3R32	5910-351-0436	7	A3A1A3C17
5905-833-6513	12	A3A1A3R34	5910-351-0436	7	A3A1A3C18
5905-833-6513	12	A3A1A3R37	5910-351-0436	7	A3A1A3C19
5905-833-6513	12	A3A1A3R38	5910-351-0436	7	A3A1A3C21
5905-833-6513	12	A3A1A3R39	5910-404-1180	5	A3A1A2C1
5905-833-6513	12	A3A1A3R40	5910-434-2977	6	A3C1
5905-833-6513	12	A3A1A3R41	5910-434-2977	6	A3C2
5905-835-3844	7	A3A1A3R77	5910-434-2977	6	A3C3
5905-835-3844	7	A3A1A3R80	5910-434-2977	6	A3C4
5905-835-3844	7	A3A1A3R83	5910-689-1393	6	A3A1A3C5
5905-835-3844	7	A3A1A3R84	5910-689-1393	6	A3A1A3C6
5905-835-3844	7	A3A1A3R85	5910-766-8793	12	A3A1A3C27
5905-835-3844	12	A3A1A3R78	5910-766-8793	12	A3A1A3C28
5905-835-3844	12	A3A1A3R79	5910-847-7288	12	A3A1A3C15
5905-835-3909	5	A3A1A2R25	5910-847-7288	12	A3A1A3C16
5905-835-3909	5	A3A1A2R26	5910-893-6747	7	A3A1A3C20
5905-835-3909	7	A3A1A3R62	5910-978-7690	7	A3A1A3C22
5905-889-0293	5	A3A1A2R8	5910-978-7690	12	A3A1A3C24
5905-914-9230	7	A3A1A3R82	5910-978-7690	12	A3A1A3C26
5905-926-8612	7	A3A1A3R9	5920-227-9142	3	A3A1F1
5905-926-8612	12	A3A1A3R8	5920-556-0144	3	A3A1XF1
5905-997-2212	7	A3A1A3R81	5930-134-1311	8	A3A1A3S4
5910-134-1320	7	A3A1A3C7	5930-134-1312	8	A3A1A3S1-3
5910-134-1321	6	A3A1A3C8	5930-426-7491	5	A3A1A25-7
5910-134-1321	6	A3A1A3C9	5930-426-8582	3	A3A1S9

SECTION III. INDEX-FEDERAL STOCK NUMBER AND REFERENCE NUMBER CROSS REFERENCE TO FIGURE AND ITEM NUMBER OR REFERENCE DESIGNATION (CONTINUED)

FEDERAL STOCK NUMBER	FIGURE NUMBER	ITEM NUMBER OR REF. DESIGNATION	FEDERAL STOCK NUMBER	FIGURE NUMBER	ITEM NUMBER OR REF. DESIGNATION
5935-063-8248	6	A3A1A3MP4	5935-134-1424	8	A3A1A3XV2
5935-063-8248		A3A1A2MP6	5935-134-1424	8	A3A1A3XV3
5935-134-1417	8	A3A1A3X18	5935-134-1424	8	A3A1A3XV4
5935-134-1417	8	A3A1A3X19	5935-134-1424	8	A3A1A3XV5
5935-134-1417	8	A3A1A3X20	5935-134-1424	8	A3A1A3XV6
5935-134-1417	8	A3A1A3X21	5935-162-8619	1	A1J2
5935-134-1417	8	A3A1A3X22	5935-162-8619	3	A3A1J1
5935-134-1417	8	A3A1A3X23	5935-162-8622	1	A1J6
5935-134-1417	8	A3A1A3X24	5935-162-8622	3	A3A1J5
5935-134-1417	8	A3A1A3X25	5935-167-6247	5	A3A1A2J1
5935-134-1417	8	A3A1A3X26	5935-434-2948	10	A1E2
5935-134-1417	8	A3A1A3X27	5935-435-8614	1	A1J4
5935-134-1417	8	A3A1A3X28	5935-435-8614	3	A3A1J3
5935-134-1417	8	A3A1A3X29	5935-843-7362	3	A3A1A1P1
5935-134-1417		A3A1A2X2	5935-959-2601	8	A3A1A3J1
5935-134-1417		A3A1A2X3	5940-404-5206	10	A1E1
5935-134-1417		A3A1A2X4	5940-404-5206	11	A2E1
5935-134-1418	8	A3A1A3X7	5940-404-5206	11	A2E2
5935-134-1418	8	A3A1A3X8	5940-404-5206	11	A2E3
5935-134-1418	8	A3A1A3X9	5945-455-2221	5	A3A1A2K1
5935-134-1418	8	A3A1A3X10	5945-455-2221	58	A3A1A2K2
5935-134-1418	8	A3A1A3X11	5950-468-2860	3	A3A1T1
5935-134-1418	8	A3A1A3X12	5960-137-4750	6	A3A1V1T06
5935-134-1418	8	A3A1A3X13	5961-069-1027	5	A3A1A2XQ1
5935-134-1418	8	A3A1A3X14	5961-069-1027	6	A3A1A3XQ1
5935-134-1418	8	A3A1A3X15	5961-092-0128	6	A3A1A3Q26
5935-134-1418	8	A3A1A3X16	5961-092-0128	6	A3A1A3Q27
5935-134-1418	8	A3A1A3X17	5961-092-0128	6	A3A1A3Q28
5935-134-1418		A3A1A2X1	5961-134-1310	6	A3A1A3Q36
5935-134-1419	3	A3A1J7	5961-134-1310	6	A3A1A3Q37
5935-134-1420	11	A2E4	5961-162-1819	6	A3A1A3Q33
5935-134-1421	11	A2E5	5961-162-1819	6	A3A1A3Q34
5935-134-1422	8	A3A1A3A1	5961-350-8230	6	A3A1A3Q35
5935-134-1424	8	A3A1A3XV1	5961-58-8787	7	A3A1A3CR19

SECTION III. INDEX-FEDERAL STOCK NUMBER AND REFERENCE NUMBER CROSS REFERENCE TO FIGURE AND ITEM NUMBER OR REFERENCE DESIGNATION (CONTINUED)

FEDERAL STOCK NUMBER	FIGURE NUMBER	ITEM NUMBER OR REF. DESIGNATION	FEDERAL STOCK NUMBER	FIGURE NUMBER	ITEM NUMBER OR REF. DESIGNATION
5961-465-4405	7	A3A1A3CR1	5961-882-2916	7	A3A1A3CR8
5961-465-4405	7	A3A1A3CR2	5961-882-2916	12	A3A1A3CR13
5961-465-4405	7	A3A1A3CR3	5961-882-2916	12	A3A1A3CR14
5961-465-4405	7	A3A1A3CR4	5961-882-2916	12	A3A1A3CR15
5961-465-4405	7	A3A1A3CR5	5961-896-8706	6	A3A1A3Q14
5961-465-4405	7	A3A1A3CR6	5961-896-8706	6	A3A1A3Q15
5961-465-4405	7	A3A1A3CR7	5961-896-8706	6	A3A1A3Q16
5961-465-4405	7	A3A1A3CR8	5961-896-8706	6	A3A1A3Q17
5961-465-4405	7	A3A1A3CR9	5961-896-8706	6	A3A1A3Q19
5961-491-1431	5	A3A1A2Q2	5961-896-8706	6	A3A1A3Q20
5961-491-1431	5	A3A1A2Q3	5961-929-2857	5	A3A1A2Q1
5961-491-1431	5	A3A1A2Q4	5961-929-2857	5	A3A1A2Q6
5961-491-1431	5	A3A1A2Q5	5961-929-2857	6	A3A1A3Q1
5961-491-1431	6	A3A1A3Q6	5961-929-2857	6	A3A1A3Q2
5961-491-1431	6	A3A1A3Q7	5961-929-2857	6	A3A1A3Q3
5961-491-1431	6	A3A1A3Q8	5961-929-2857	6	A3A1A3Q4
5961-491-1431	6	A3A1A3Q9	5961-929-2857	6	A3A1A3Q5
5961-491-1431	6	A3A1A3Q11	5961-929-2857	6	A3A1A3Q21
5961-491-1431	6	A3A1A3Q12	5961-929-2857	6	A3A1A3Q22
5961-491-1431	6	A3A1A3Q13	5961-935-1135	7	A3A1A3CR11
5961-491-1431	6	A3A1A3Q24	5961-935-1135	7	A3A1A3CR12
5961-519-6178	5	A3A1A2CR6	5962-066-0171	6	A3A1A3U2
5961-519-6178	5	A3A1A2CR7	5962-102-7519	6	A3A1A3U7
5961-853-2601	6	A3A1A3Q25	5962-102-7519	6	A3A1A3U8
5961-853-2601	6	A3A1A3Q29	5962-102-7519	6	A3A1A3U9
5961-853-2601	6	A3A1A3Q30	5962-102-7519	6	A3A1A3U10
5961-853-2601	6	A3A1A3Q31	5962-102-7519	6	A3A1A3U11
5961-853-2601	6	A3A1A3Q32	5962-238-3123	6	A3A1A3U12
5961-882-2916	5	A3A1A2CR1	5962-238-3123	6	A3A1A3U13
5961-882-2916	5	A3A1A2CR2	5962-238-3123	6	A3A1A3U14
5961-882-2916	5	A3A1A2CR3	5962-238-3123	6	A3A1A3U15
5961-882-2916	5	A3A1A2CR4	5962-238-3123	6	A3A1A3U16
5961-882-2916	5	A3A1A2CR5	5962-256-0344	6	A3A1A3U23
5961-882-2916	7	A3A1A3CR16	5962-318-2223	5	A3A1A2U4
5961-882-2916	7	A3A1A3CR17	5962-318-2223	6	A3A1A3U1

SECTION III. INDEX-FEDERAL STOCK NUMBER AND REFERENCE NUMBER CROSS REFERENCE
TO FIGURE AND ITEM NUMBER OR REFERENCE DESIGNATION (CONTINUED)

FEDERAL STOCK NUMBER	FIGURE NUMBER	ITEM NUMBER OR REF. DESIGNATION	FEDERAL STOCK NUMBER	FIGURE NUMBER	ITEM NUMBER OR REF. DESIGNATION
5962-318-2223	6	A3A1A3U3	6625-013-7688	5	A3A1A2U5
5962-318-2223	6	A3A1A3U4	6625-020-9798	3	A3A1MP4
5962-318-2224	5	A3A1A2U3	6625-020-9798	3	A3A1MP5
5962-341-0544	5	A3A1A2U2	6625-134-1425	8	A3A1A3A1PC1
5962-455-3459	6	A3A1A3U6	6625-142-3477	4	A3A1MP14
5962-484-2353	6	A3A1A3U17	6625-273-0780	2	A3MP9
5962-484-2353	6	A3A1A3U18	6625-273-0789	6	A3A1A3U25
5962-484-2353	6	A3A1A3U19	6625-273-0792	6	A3A1A3U26
5962-484-2353	6	A3A1A3U20	6625-275-1775	6	A3A1A3U24
5962-484-2353	6	A3A1A3U21	6625-432-1443	1	A1
5962-484-2353	6	A3A1A3U22	6625-432-1444	1	A2
5962-762-0644	5	A3A1A2U1	6625-432-1445	2	A3MP4
5962-789-3359	6	A3A1A3U5	6625-432-1447	2	A3MP10
5975-027-4598	5	A3A1A2MP5	6625-432-1448	4	A3A1MP2
5975-027-4598	8	A3A1A3MP5	6625-432-1449	4	A3A1MP3
5975-134-1319	11	A2MP4	6625-432-1450	4	A3A1MP6
5975-284-6588	11	A2MP1	6625-432-1459	5	A3A1A2MP1
5975-479-3304	3	A3A1MP1	6625-432-1459	5	A3A1A2MP2
5975-613-9064	11	A2MP3	6625-432-1459	8	A3A1A3MP1
5975-922-0877	10	A1MP1	6625-432-1459	8	A3A1A3MP2
5975-958-6490	11	A2MP2	6625-432-1460	5	A3A1A2PC1
5999-121-2034	6	A3A1A3MP3	6625-432-1461	5	A3A1A2U6
6145-080-4383	5	A3A1A2W1	6625-432-1463	9	A3A1MP7
6145-080-4383	8	A3A1A3W1	6625-432-1464	9	A3A1MP8
6145-519-0116	4	A3A1W1	6625-432-1465	9	A3A1MP9
6145-542-6092	11	A2W1	6625-432-1466	9	A3A1MP10
6145-578-3243	5	A3A1A2W2	6625-432-1471	4	A3A1MP15
6145-583-3781	10	A1W1	6625-432-1472	4	A3A1MP16
6145-583-3781	11	A2W2	6695-187-3747	2	A3MP12
6145-752-1307	3	A3A1A1W1	9905-134-1316	3	A3A1MP12
6150-464-1810	2	A3A1A1	9905-134-1317	2	A3MP11
6210-137-2454	9	A3A1DS1	9905-134-1318	3	A3A1MP13
6210-137-2454	9	A3A1DS2			
6210-137-2454	9	A3A1DS3			

TM 11-6625-2616-24P
SECTION III INDEX-FEDERAL STOCK NUMBER AND REFERENCE NUMBER CROSS REFERENCE
TO FIGURE AND ITEM NUMBER OR REFERENCE DESIGNATION (CONTINUED)

<u>REFERENCE NO.</u>	<u>CODE NO.</u>	<u>FIG. NO.</u>	<u>REF. DES.</u>	<u>REFERENCE NO.</u>	<u>CODE NO.</u>	<u>FIG. NO.</u>	<u>REF. DES.</u>
BH2085W475	08065	2	A3MP5	MS27717-23	96906	4	A3A1S8
BH2085W475	08065	2	A3MP6	MS35206-213	96906	5	A3A1A2MP1H2
BH2085W475	08065	2	A3MP7	MS35206-213	96906	8	A3A1A3MP1H2
BH2085W475	08065	2	A3MP8	MS35206-214	96906	3	A3A1S9H2
CK05BX471K	81349	7	A3A1A3C22	MS35206-214	96906	9	A3A1MP1OH2
CK05BX471K	81349	12	A3A1A3C24	MS35206-216	96906	5	A3A1A2MP1H2
CK05BX471K	81349	12	A3A1A3C26	MS35206-226	96906	4	A3A1MP15H4
CK05BX680K	81349	7	A3A1A3C20	MS35206-227	96906	4	A3A1MP6H8
CK06BX103K	81349	12	A3A1A3C15	MS35206-229	96906	2	A3MP5H1
CK06BX103K	81349	12	A3A1A3C16	MS35206-229	96906	2	A3MP9H2
CML5FD131G03	81349	12	A3A1A3C27	MS35206-229	96906	2	A3MP1OH2
CML5FD131G03	81349	12	A3A1A3C28	MS35206-243	96906	3	A3A1T1H4
CM26-3-05-19	71744	9	A3A1DS1	MS35265-28	96906	6	A3A1A3MP3H2
CM26-3-05-19	71744	9	A3A1DS2	MS35338-40	96906	3	A3A1S9H2
CM26-3-05-19	71744	9	A3A1DS3	MS35338-40	96906	5	A3A1A2MP1H4
C003LGF3-18-0260	81349	3	A3A1A1W1	MS35338-40	96906	5	A3A1A2MP5H1
LABA2	73445	5	A3A1A2C1	MS35338-40	96906	8	A3A1A3MP1H4
D305	03626	3	A3A1T1	MS35338-40	96906	8	A3A1A3MP5H1
ET102X010A01	73445	6	A3C1	MS35338-40	96906	9	A3A1MP1OH2
ET102X010A01	73445	6	A3C2	MS35338-41	96906	2	A3MP5H1
ET102X010A01	73445	6	A3C3	MS35338-41	96906	2	A3MP9H2
ET102X010A01	73445	6	A3C4	MS35338-41	96906	2	A3MP1OH2
FHN2CG	81349	3	A3ALXF1	MS35338-41	96906	2	A3MP1OH2
F02B250V1-4A	81349	3	A3A1F1	MS35338-41	96906	2	A3MP12H4
MC830P	04713	6	A3A1A3U5	MS35338-41	96906	4	A3A1MP15H4
MC846P	04713	6	A3A1A3U2	MS35338-41	96906	6	A3A1A3MP3H2
MS15795-804	96906	5	A3A1A2MP5H1	MS35338-42	96906	3	A3A1T1H4
MS15795-804	96906	8	A3A1A3MP5H1	MS35649-242	96906	3	A3A1S9H2
MS15795-806	96906	2	A3MP5H1	MS35649-242	96906	5	A3A1A2MP5H1
MS24663	96906	3	A3A1A1P1	MS35649-242	96906	8	A3A1A3MP5H1
	96906	4	A3A1MP2H4	MW3014B1	16950	8	A3A1A3X18
MS24693S25	96906	4	A3A1MP3H4	MW3014B1	16950	8	A3A1A3X19
MS24693S26	96906	2	A3MP12H4	MW3014B1	16950	8	A3A1A3X20
MS24693S8	96906	5	A3A1A2MP5H1	MW3014B1	16950	8	A3A1A3X21
MS24693S8	96906	8	A3A1A3MP5H1	MW3014B1	16950	8	A3A1A3X22

SECTION III INDEX-FEDERAL STOCK NUMBER AND REFERENCE NUMBER CROSS REFERENCE
TO FIGURE AND ITEM NUMBER OR REFERENCE DESIGNATION (CONTINUED)

<u>REFERENCE NO.</u>	<u>CODE NO.</u>	<u>FIG NO.</u>	<u>REF. DES.</u>	<u>REFERENCE NO.</u>	<u>CODE NO.</u>	<u>FIG. NO.</u>	<u>REF. DES.</u>
MW3014B1	16950	8	A3A1A3X23	N741DA	18324	5	A3A1A2U3
MW3014B1	16950	8	A3A1A3X24	N74192B	18324	5	A3A1A2U1
MW3014B1	16950	8	A3A1A3X25	N7420A	18324	6	A3A1A3U23
MW3014B1	16950	8	A3A1A3X26	N7441B	18324	6	A3A1A3U17
MW3014B1	16950	8	A3A1A3X27	N7441B	18324	6	A3A1A3U18
MW3014B1	16950	8	A3A1A3X28	N7441B	18324	6	A3A1A3U19
MW3014B1	16950	8	A3A1A3X29	N7441B	18324	6	A3A1A3U20
MW3014B1	16950		A3A1A2X2	N7441B	18324	6	A3A1A3U21
MW3014B1	16950		A3A1A2X3	N7441B	18324	6	A3A1A3U22
MW3014B1	16950		A3A1A2X4	N7473A	18324	6	A3A1A3U6
MW3016B1	16950	8	A3A1A3X7	N7475B	18324	6	A3A1A3U12
MW3016B1	16950	8	A3A1A3X8	N7475B	18324	6	A3A1A3U13
MW3016B1	16950	8	A3A1A3X9	N7475B	18324	6	A3A1A3U14
MW3016B1	16950	8	A3A1A3X10	N7475B	18324	6	A3A1A3U15
MW3016B1	16950	8	A3A1A3X11	N7475B	18324	6	A3A1A3U16
MW3016B1	16950	8	A3A1A3X12	N7490A	18324	6	A3A1A3U7
MW3016B1	16950	8	A3A1A3X13	N7490A	18324	6	A3A1A3U8
MW3016B1	16950	8	A3A1A3X14	N7490A	18324	6	A3A1A3U9
MW3016B1	16950	8	A3A1A3X15	N7490A	18324	6	A3A1A3U10
MW3016B1	16950	8	A3A1A3X16	N7490A	18324	6	A3A1A3U11
MW3016B1	16950	8	A3A1A3X17	P1C1M54	06383	5	A3A1A2MP5
MW3016B1	16950		A3A1A2X1	P1C1M54	06383	8	A3A1A3MP5
NAS671 -6	80205	2	A3MP5H1	FB530W10-24	86797	2	A3MP1
NAS671 -6	80205	2	A3MP12H4	FB530W10-24	86797	2	A3MP2
NAS671 -6	80205	6	A3A1A3MP3H2	RG188AU	81349	5	A3A1A2W1
NO20AWG	71002	10	A1W1	RG188AU	81349	8	A3A1A3W1
NO20AWG	71002	11	A2W2	RG58CU	81349	11	A2W1
NO22AWG	81349	5	A3A1A2W2	RLR07C101GM	81349	12	A3A1A3R4
NO24AWG	71002	4	A3A1W1	RLR07C102GM	81349	7	A3A1A3R9
N7400A	18324	5	A3A1A2U4	RLR07C102GM	81349	12	A3A1A3R8
N7400A	18324	6	A3A1A3U1	RLR07C103GM	81349	5	A3A1A2R22
N7400A	18324	6	A3A1A3U3	RLR07C103GM	81349	5	A3A1A2R23
N7400A	18324	6	A3A1A3U4	RLR07C103GM	81349	5	A3A1A2R24
N7404A	18324	5	A3A1A2U2	RLR07C103GM	81349	7	A3A1A3R46

SECTION III INDEX-FEDERAL STOCK NUMBER AND REFERENCE NUMBER CROSS REFERENCE
TO FIGURE AND ITEM NUMBER OR REFERENCE DESIGNATION (CONTINUED)

<u>REFERENCE NO.</u>	<u>CODE NO.</u>	<u>FIG. NO.</u>	<u>REF. DES.</u>	<u>REFERENCE NO.</u>	<u>CODE NO.</u>	<u>FIG. NO.</u>	<u>REF. DES.</u>
RLR07C103GM	81349	7	A3A1A3R47	RLR07C202GM	81349	7	A3A1A3R11
RLR07C103GM	81349	7	A3A1A3R48	RLR07C202GM	81349	7	A3A1A3R12
RLR07C103GM	81349	7	A3A1A3R49	RLR07C202GM	81349	7	A3A1A3R13
RLR07C103GM	81349	7	A3A1A3R50	RLR07C202GM	81349	7	A3A1A3R14
RLR07C103GM	81349	12	A3A1A3R54	RLR07C202GM	81349	7	A3A1A3R15
RLR07C103GM	81349	12	A3A1A3R56	RLR07C202GM	81349	7	A3A1A3R17
RLR07C103GM	81349	12	A3A1A3R104	RLR07C202GM	81349	7	A3A1A3R18
RLR07C104GM	81349	7	A3A1A3R77	RLR07C202GM	81349	7	A3A1A3R19
RLR07C104GM	81349	7	A3A1A3R80	RLR07C202GM	81349	7	A3A1A3R20
RLR07C104GM	81349	7	A3A1A3R83	RLR07C202GM	81349	7	A3A1A3R21
RLR07C104GM	81349	7	A3A1A3R84	RLR07C202GM	81349	7	A3A1A3R88
RLR07C104GM	81349	7	A3A1A3R85	RLR07C202GM	81349	12	A3A1A3R16
RLR07C104GM	81349	12	A3A1A3R78	RLR07C202GM	81349	12	A3A1A3R22
RLR07C104GM	81349	12	A3A1A3R79	RLR07C202GM	81349	12	A3A1A3R23
RLR07C153GM	81349	7	A3A1A3R45	RLR07C203GM	81349	5	A3A1A2R25
RLR07C153GM	81349	7	A3A1A3R59	RLR07C203GM	81349	5	A3A1A2R26
RLR07C153GM	81349	7	A3A1A3R90	RLR07C203GM	81349	7	A3A1A3R62
RLR07C153GM	81349	7	A3A1A3R91	RLR07C273GM	81349	7	A3A1A3R63
RLR07C153GM	81349	7	A3A1A3R92	RLR07C273GM	81349	7	A3A1A3R64
RLR07C153GM	81349	7	A3A1A3R93	RLR07C273GM	81349	7	A3A1A3R65
RLR07C153GM	81349	7	A3A1A3R94	RLR07C301GM	81349	5	A3A1A2R19
RLR07C153GM	81349	12	A3A1A3R57	RLR07C301GM	81349	5	A3A1A2R20
RLR07C153GM	81349	12	A3A1A3R58	RLR07C333GM	81349	5	A3A1A2R12
RLR07C202GM	81349	5	A3A1A2R3	RLR07C333GM	81349	5	A3A1A2R13
RLR07C202GM	81349	5	A3A1A2R6	RLR07C333GM	81349	5	A3A1A2R14
RLR07C202GM	81349	5	A3A1A2R9	RLR07C333GM	81349	5	A3A1A2R15
RLR07C202GM	81349	5	A3A1A2R10	RLR07C333GM	81349	7	A3A1A3R27
RLR07C202GM	81349	5	A3A1A2R11	RLR07C333GM	81349	7	A3A1A3R66
RLR07C202GM	81349	5	A3A1A2R17	RLR07C333GM	81349	7	A3A1A3R67
RLR07C202GM	81349	5	A3A1A2R18	RLR07C333GM	81349	7	A3A1A3R68
RLR07C202GM	81349	5	A3A1A2R21	RLR07C333GM	81349	7	A3A1A3R69
RLR07C202GM	81349	5	A3A1A2R29	RLR07C333GM	81349	7	A3A1A3R70
RLR07C202GM	81349	7	A3A1A3R7	RLR07C333GM	81349	7	A3A1A3R71
RLR07C202GM	81349	7	A3A1A3R10	RLR07C333GM	81349	7	A3A1A3R72

SECTION III INDEX-FEDERAL STOCK NUMBER AND REFERENCE NUMBER CROSS REFERENCE

TO FIGURE AND ITEM NUMBER OR REFERENCE DESIGNATION (CONTINUED)

<u>REFERENCE NO.</u>	<u>CODE NO.</u>	<u>FIG. NO.</u>	<u>REF. DES.</u>	<u>REFERENCE NO.</u>	<u>CODE NO.</u>	<u>FIG. NO.</u>	<u>REF. DES.</u>
RLR07C333GM	81349	7	A3A1A3R73	RLR2054R7GM	81349	7	A3A1A3R1
RLR07C333GM	81349	7	A3A1A3R74	RLR2054R7GM	81349	7	A3A1A3R87
RLR07C333GM	81349	7	A3A1A3R95	RNC60K3923FS	81349	7	A3A1A3R86
RLR07C333GM	81349	7	A3A1A3R96	RN70E9093F	81349	5	A3A1A2R8
RLR07C333GM	81349	7	A3A1A3R97	RW79U4991F	81349	7	A3A1A3R81
RLR07C333GM	81349	7	A3A1A3R98	SE1010	07263	6	A3A1A3Q36
RLR07C333GM	81349	7	A3A1A3R99	SE1010	07263	6	A3A1A3Q37
RLR07C333GM	81349	7	A3A1A3R100	SR5P4	28520	3	A3A1MP1
RLR07C333GM	81349	12	A3A1A3R75	T1P31A	01295	6	A3A1A3Q35
RLR07C333GM	81349	12	A3A1A3R76	T1P32A	01295	6	A3A1A3Q33
RLR07C391GM	81349	7	A3A1A3R105	T1P32A	01295	6	A3A1A3Q34
RLR07C391GM	81349	7	A3A1A3R106	T362B106K025A5	73445	6	A3A1A3C8
RLR07C511GM	81349	7	A3A1A3R5	T362B106K025A5	73445	6	A3A1A3C9
RLR07C512GM	81349	5	A3A1A2R28	T362B106K025A5	73445	6	A3A1A3C10
RLR07C512GM	81349	7	A3A1A3R29	T362B106K025A5	73445	6	A3A1A3C11
RLR07C512GM	81349	7	A3A1A3R30	T362B106K025A5	73445	6	A3A1A3C12
RLR07C512GM	81349	7	A3A1A3R33	T362B106K025A5	73445	6	A3A1A3C13
RLR07C512GM	81349	7	A3A1A3R35	T362B106K025A5	73445	6	A3A1A3C14
RLR07C512GM	81349	7	A3A1A3R36	T362B476K006A5	73445	7	A3A1A3C7
RLR07C512GM	81349	7	A3A1A3R42	T363B475K050A5	73445	6	A3A1A3C9
RLR07C512GM	81349	7	A3A1A3R43	T363B475K050A5	73445	6	A3A1A3C10
RLR07C512GM	81349	7	A3A1A3R44	T363B475K050A5	73445	6	A3A1A3C11
RLR07C512GM	81349	12	A3A1A3R31	T363B475K050A5	73445	6	A3A1A3C12
RLR07C512GM	81349	12	A3A1A3R32	ZM1000	73445	6	A3A1V1T06
RLR07C512GM	81349	12	A3A1A3R34	1N4005	04713	7	A3A1A3CR1
RLR07C512GM	81349	12	A3A1A3R37	1N4005	04713	7	A3A1A3CR2
RLR07C512GM	81349	12	A3A1A3R38	1N4005	04713	7	A3A1A3CR3
RLR07C512GM	81349	12	A3A1A3R39	1N4005	04713	7	A3A1A3CR4
RLR07C512GM	81349	12	A3A1A3R40	1N4005	04713	7	A3A1A3CR5
RLR07C512GM	81349	12	A3A1A3R41	1N4005	04713	7	A3A1A3CR6
RLR07C513GM	81349	7	A3A1A3R28	1N4005	04713	7	A3A1A3CR7
RLR07C513GM	81349	7	A3A1A3R101	1N4005	04713	7	A3A1A3CR8
RLR07C513GM	81349	12	A3A1A3R102	1N4005	04713	7	A3A1A3CR9
RLR07C513GM	81349	12	A3A1A3R103	1N4148	81349	7	A3A1A3CR11
RLR205101GR	81349	7	A3A1A3R82	1N4148	81349	7	A3A1A3CR12

**SECTION III INDEX-FEDERAL STOCK NUMBER AND REFERENCE NUMBER CROSS REFERENCE
TO FIGURE AND ITEM NUMBER OR REFERENCE DESIGNATION (CONTINUED)**

<u>REFERENCE NO.</u>	<u>CODE NO.</u>	<u>FIG. NO.</u>	<u>REF. DES.</u>	<u>REFERENCE NO.</u>	<u>CODE NO.</u>	<u>FIG. NO.</u>	<u>REF. DES.</u>
1N458	81349	5	A3A1A2CR6	2N3904	04713	6	A3A1A3Q16
1N458	81349	5	A3A1A2CR7	2N3904	04713	6	A3A1A3Q17
1N4735	04713	7	A3A1A3CR19	2N3904	04713	6	A3A1A3Q19
10160	07047	5	A3A1A2XQ1	2N3904	04713	6	A3A1A3Q20
10160	07047	6	A3A1A3XQ1	2N3906	27014	6	A3A1A3Q26
117207-426-107	83330	10	A1E2	2N3906	27014	6	A3A1A3Q27
2N1893	01281	6	A3A1A3Q25	2N3906	27014	6	A3A1A3Q28
2N1893	01281	6	A3A1A3Q29	2001-55	03626	4	A3A1MP2H4
2N1893	01281	6	A3A1A3Q30	2001-55	03626	4	A3A1MP3H4
2N1893	01281	6	A3A1A3Q31	2012-65	03626	3	A3A1MP12
2N1893	01281	6	A3A1A3Q32	2012-66	03626	3	A3A1MP13
2N3569	81349	5	A3A1A2Q2	2222-023-90011	73445	6	A3A1A3C5
2N3569	81349	5	A3A1A2Q3	2222-023-90011	73445	6	A3A1A3C6
2N3569	81349	5	A3A1A2Q4	225-21021-205	02660	5	A3A1A2J1
2N3569	81349	5	A3A1A2Q5	225-22221-205	02660	8	AeA1A3J1
2N3569	81349	6	A3A1A3Q6	2854	05276	1	A1J2
2N3569	81349	6	A3A1A3Q7	2854	05276	3	A3A1J1
2N3569	81349	6	A3A1A3Q8	2854-2	05276	1	A1J6
2N3569	81349	6	A3A1A3Q9	2854-2	05276	3	A3A1J5
2N3569	81349	6	A3A1A3Q11	2854-4	05276	3	A3A1J7
2N3569	81349	6	A3A1A3Q12	2854-6	05276	1	A1J4
2N3569	81349	6	A3A1A3Q13	2854-6	05276	3	A3A1J3
2N3569	81349	6	A3A1A3Q24	34-22	03626	5	A3A1A285-7
2N3645	81349	5	A3A1A2Q1	34-25	03626	6	A3A1A3U24
2N3645	81349	5	A3A1A2Q6	34-28	03626	6	A3A1A3U25
2N3645	81349	6	A3A1A3Q1	34-29	03626	9	A3A1MP10
2N3645	81349	6	A3A1A3Q2	34-31	03626	6	A3A1A3U26
2N3645	81349	6	A3A1A3Q3	34-34	03626	5	A3A1A2U5
2N3645	81349	6	A3A1A3Q4	34-36	03626	4	A3A1MP16
2N3645	81349	6	A3A1A3Q5	34-37-2	03626	2	A3MP9
2N3645	81349	6	A3A1A3Q21	34-38-2	03626	2	A3MP10
2N3645	81349	6	A3A1A3Q22	34-40	03626	4	A3A1MP15
2N3904	04713	6	A3A1A3Q14	34-41	03626	4	A3A1MP6
2N3904	04713	6	A3A1A3Q15	34-43	03626	8	A3A1A3A1PC1

SECTION III INDEX-FEDERAL STOCK NUMBER AND REFERENCE NUMBER CROSS REFERENCE
 TO FIGURE AND ITEM NUMBER OR REFERENCE DESIGNATION (CONTINUED)

<u>REFERENCE NO.</u>	<u>CODE NO.</u>	<u>FIG. NO.</u>	<u>REF. DES.</u>	<u>REFERENCE NO.</u>	<u>CODE NO.</u>	<u>FIG. NO.</u>	<u>REF. DES.</u>
34-44	03626	4	A3A1A3	5002-010	03626	7	A3A1A3C17
34-45	03626	2	A3MP11	5002-010	03626	7	A3A1A3C18
34-47	03626	5	A3A1A2PC1	5002-010	03626	7	A3A1A3C19
34-48	03626	3	A3A1A2	5002-010	03626	7	A3A1A3C21
34-49	03626	2	A3MP12	5003-002	03626	5	A3A1A2CR1
34-50	03626	1	A3	5003-002	03626	5	A3A1A2CR2
34-51	03626	5	A3A1A2MP1	5003-002	03626	5	A3A1A2CR3
34-51	03626	5	A3A1A2MP2	5003-002	03626	5	A3A1A2CR4
34-51	03626	8	A3A1A3MP1	5003-002	03626	5	A3A1A2CR5
34-51	03626	8	A3A1A3MP2	5003-002	03626	7	A3A1A3CR16
34-52	03626	4	A3A1MP2	5003-002	03626	7	A3A1A3CR17
34-53	03626	4	A3A1MP3	5003-002	03626	7	A3A1A3CR18
34-55	03626	5	A3A1A2U6	5003-002	03626	12	A3A1A3CR13
34-58	03626	3	A3A1MP4	5003-002	03626	12	A3A1A3CR14
34-58	03626	3	A3A1MP5	5003-002	03626	12	A3A1A3CR15
34-59	03626	2	A3MP3	5005-007	03626	5	A3A1A2K1
34-60	03626	2	A3MP4	5005-007	03626	5	A3A1A2K2
34-61	03626	2	A3A1A1	5349	08863	5	A3A1A2MP5H1
34-63-1	03626	9	A3A1MP7	5349	08863	8	A3A1A3MP5H1
34-63-2	03626	9	A3A1MP8	55702	02660	8	A3A1A3XV1
34-63-3	03626	9	A3A1MP9	55702	02660	8	A3A1A3XV2
34-65	03626	1	A2	55702	02660	8	A3A1A3XV3
34-65-1-2	03626	11	A2E4	55702	02660	8	A3A1A3XV4
34-65-1-3	03626	11	A2E5	55702	02660	8	A3A1A3XV5
34-65-13	03626	11	A2MP4	55702	02660	8	A3A1A3XV6
34-66	03626	1	A1	60CS	76545	10	A1E1
34-67	03626	2	A3A1	60CS	76545	11	A2E1
34-78	03626	8	A3A1A3A1	60CS	76545	11	A2E2
34-82	03626	4	A3A1MP14	60CS	76545	11	A2E3
34-84	03626	8	A3A1A3S1-3	6166B	13103	6	A3A1A3MP3
34-85	03626	8	A3A1A3S4	62BLK	76545	11	A2MP1
380598-2	00779	6	A3A1A3MP4	62BLU	76545	11	A2MP2
380598-2	00779		A3A1A2MP6	62RED	76545	11	A2MP3
46256LPR	82389	3	A3A1S9	62YELLOW	76545	10	A1MP1

SECTION III INDEX-FEDERAL STOCK NUMBER AND REFERENCE NUMBER CROSS REFERENCE

TO FIGURE AND ITEM NUMBER OR REFERENCE DESIGNATION (CONTINUED)

<u>REFERENCE NO.</u>	<u>CODE NO.</u>	<u>FIG. NO.</u>	<u>REF. DES.</u>	<u>REFERENCE NO.</u>	<u>CODE NO.</u>	<u>FIG. NO.</u>	<u>REF. DES.</u>
89XR100	81349	8	A3A1A3R2				
89XR100	81349	8	A3A1A3R3				
89XR100K	73138	5	A3A1A2R1				
89XR100K	73138	5	A3A1A2R7				
89XR100K	73138	7	A3A1A3R6				
89XR5K	73138	5	A3A1A2R4				
89XR500	73138	5	A3A1A2R5				

**SECTION IV INDEX- REFERENCE DESIGNATION
CROSS REFERENCE TO PAGE NUMBER**

REFERENCE DESIGNATION	PAGE NUMBER	REFERENCE DESIGNATION	PAGE NUMBER	REFERENCE DESIGNATION	PAGE NUMBER
A1	2-1	A3MP8	2-1	A3A1MP14	2-7
A1E1	2-1	A3MP9	2-1	A3A1MP15	2-8
A1E2	2-1	A3MP9H2	2-1	A3A1MP15H4	2-8
A1J2	2-2	A3MP10	2-2	A3A1MP16	2-8
A1J4	2-2	A3MP10H2	2-2	A3A1S8	2-7
A1J6	2-2	A3MP11	2-2	A3A1S9	2-3
A1MP1	2-1	A3MP12	2-2	A3A1S9H2	2-3
A1W1	2-1	A3MP12H4	2-2	A3A1T1	2-3
A2	2-1	A3A1	2-2	A3A1T1H4	2-3
A2E1	2-1	A3A1DS1	2-7	A3A1V1T06	2-7
A2E2	2-1	A3A1DS2	2-7	A3A1W1	2-8
A2E3	2-1	A3A1DS3	2-7	A3A1XF1	2-2
A2E4	2-1	A3A1F1	2-2	A3A1A1	2-2
A2E5	2-1	A3A1J1	2-2	A3A1A1P1	2-2
A2MP1	2-1	A3K1J3	2-2	A3A1A1W1	2-2
A2MP2	2-1	A3A1J5	2-2	A3A1A2	2-3
A2MP3	2-1	A3A1J7	2-3	A3A1A2C1	2-3
A2MP4	2-1	A3A1MP1	2-2	A3A1A2CR1	2-4
A2W1	2-1	A3A1MP2	2-2	A3A1A2CR2	2-4
A2W2	2-1	A3A1MP2H4	2-2	A3A1A2CR3	2-4
A3	2-1	A3A1MP3	2-2	A3A1A2CR4	2-4
A3C1	2-5	A3A1MP3H4	2-2	A3A1A2CR5	2-4
A3C2	2-5	A3A1MP4	2-2	A3A1A2CR6	2-4
A3C3	2-5	A3A1MP5	2-2	A3A1A2CR7	2-4
A3C4	2-5	A3A1MP6	2-3	A3A1A2J1	2-3
A3MP1	2-1	A3A1MP6H8	2-3	A3A1A2K1	2-3
A3MP2	2-1	A3A1MP7	2-2	A3A1A2K2	2-3
A3MP3	2-1	A3A1MP8	2-7	A3A1A2MP1	2-3
A3MP4	2-1	A3A1MP9	2-7	A3A1A2MP1H2	2-3
A3MP5	2-1	A3A1MP10	2-7	A1A2MP1H4	2-3
A3MP5H1	2-1	A3A1MP10H2	2-7	A3A1A2MP2	2-3
A3MP6	2-1	A3A1MP12	2-4	A3A1A2MP5	2-4
A3MP7	2-1	A3A1MP13	2-8	A3A1A2MP5H1	2-4

SECTION IV INDEX-REFERENCE DESIGNATION
CROSS REFERENCE TO PAGE NUMBER (CONTINUED)

REFERENCE DESIGNATION	PAGE NUMBER	REFERENCE DESIGNATION	PAGE NUMBER	REFERENCE DESIGNATION	PAGE NUMBER
A3A1A2MP6	2-3	A3A1A2R29	2-3	A3A1A3C22	2-5
A3A1A2PC1	2-3	A3A1A2S5-7	2-4	A3A1A3C24	2-5
A3A1A2Q1	2-4	A3A1A2U1	2-3	A3A1A3C26	2-5
A3A1A2Q2	2-4	A3A1A2U2	2-3	A3A1A3C27	2-5
A3A1A2Q3	2-4	A3A1A2U3	2-3	A3A1A3C28	2-5
A3A1A2Q4	2-4	A3A1A2U4	2-3	A3A1A3CR1	2-6
A3A1A2Q5	2-4	A3A1A2U5	2-3	A3A1A3CR2	2-6
A3A1A2Q6	2-4	A3A1A2U6	2-3	A3A1A3CR3	2-6
A3A1A2R1	2-4	A3A1A2W1	2-3	A3A1A3CR4	2-6
A3A1A2R3	2-3	A3A1A2W2	2-4	A3A1A3CR5	2-6
A3A1A2R4	2-4	A3A1A2X	2-4	A3A1A3CR6	2-6
A3A1A2R5	2-4	A3A1A2X2	2-4	A3A1A3CR7	2-6
A3A1A2R6	2-3	A3A1A2X3	2-4	A3A1A3CR8	2-6
A3A1A2R7	2-4	A3A1X2X4	2-4	A3A1A3CR9	2-6
A3A1A2R8	2-4	A3A1A2XQ1	2-4	A3A1A3CR11	2-6
A3A1A2R9	2-3	A3A1A3	2-4	A3A1A3CR12	2-6
A3A1A2R10	2-3	A3A1A3C5	2-5	A3A1A3CR13	2-6
A3A1A2R11	2-3	A3A1A3C6	2-5	A3A1A3CR14	2-6
A3A1A2R12	2-4	A3A1A3C7	2-5	A3A1A3CR15	2-6
A3A1A2R13	2-4	A3A1A3C8	2-5	A3A1A3CR16	2-6
A3A1A2R14	2-4	A3A1A3C9	2-5	A3A1A3CR17	2-6
A3A1A2R15	2-4	A3A1A3C10	2-5	A3A1A3CR18	2-6
A3A1A2R17	2-3	A3A1A3C11	2-5	A3A1A3CR19	2-6
A3A1A2R18	2-3	A3A1A3C12	2-5	A3A1A3J1	2-5
A3A1A2R19	2-4	A3A1A3C13	2-5	A3A1A3MP1	2-4
A3A1A2R20	2-4	A3A1A3C14	2-5	A3A1A3MP1H2	2-4
A3A1A2R21	2-3	A3A1A3C15	2-5	A3A1A3MP1H4	2-4
A3A1A2R22	2-4	A3A1A3C16	2-5	A3A1A3MP2	2-4
A3A1A2R23	2-4	A3A1A3C17	2-5	A3A1A3MP3	2-5
A3A1A2R24	2-4	A3A1A3C18	2-5	A3A1MP3H2	2-5
A3A1A2R25	2-4	A3A1A3C19	2-5	A3A1A3MP4	2-7
A3A1A2R26	2-4	A3A1A3C20	2-5	A3A1A3MP5	2-7
A3A1A2R28	2-4	A3A1A3C21	2-5	A3A1A3MP5H1	2-7

**SECTION IV INDEX-REFERENCE DESIGNATION
CROSS REFERENCE TO PAGE NUMBER (CONTINUED)**

REFERENCE DESIGNATION	PAGE	REFERENCE DESIGNATION	PAGE NUMBER	REFERENCE DESIGNATION	PAGE
A3A1A3Q1	2-7	A3A1A3Q37	2-7	A3A1A3R36	2-6
A3A1A3Q2	2-7	A3A1A3R1	2-6	A3A1A3R37	2-6
A3A1A3Q3	2-7	A3A1A3R2	2-6	A3A1A3R38	2-6
A3A1A3Q4	2-7	A3A1A3R3	2-6	A3A1A3R39	2-6
A3A1A3Q5	2-7	A3A1A3R4	2-6	A3A1A3R40	2-6
A3A1A3Q6	2-7	A3A1A3R5	2-6	A3A1A3R41	2-6
A3A1A3Q7	2-7	A3A1A3R6	2-6	A3A1A3R42	2-6
A3A1A3Q8	2-7	A3A1A3R7	2-6	A3A1A3R43	2-6
A3A1A3Q9	2-7	A3A1A3R8	2-6	A3A1A3R44	2-6
A3A1A3Q11	2-7	A3A1A3R9	2-6	A3A1A3R45	2-6
A3A1A3Q12	2-7	A3A1A3R10	2-6	A3A1A3R46	2-6
A3A1A3Q13	2-7	A3A1A3R11	2-6	A3A1A3R47	2-6
A3A1A3Q14	2-7	A3A1A3R12	2-6	A3A1A3R48	2-6
A3A1A3Q15	2-7	A3A1A3R13	2-6	A3A1A3R49	2-6
A3A1A3Q16	2-7	A3A1A3R14	2-6	A3A1A3R50	2-6
A3A1A3Q17	2-7	A3A1A3R15	2-6	A3A1A3R54	2-6
A3A1A3Q19	2-7	A3A1A3R16	2-6	A3A1A3R56	2-6
A3A1A3Q20	2-7	A3A1A3R17	2-6	A3A1A3R57	2-6
A3A1A3Q21	2-7	A3A1A3R18	2-6	A3A1A3R58	2-6
A3A1A3Q22	2-7	A3A1A3R19	2-6	A3A1A3R59	2-6
A3A1A3Q24	2-7	A3A1A3R20	2-6	A3A1A3R62	2-6
A3A1A3Q25	2-7	A3A1A3R21	2-6	A3A1A3R63	2-6
A3A1A3Q26	2-7	A3A1A3R22	2-6	A3A1A3R64	2-6
A3A1A3Q27	2-7	A3A1A3R23	2-6	A3A1A3R65	2-6
A3A1A3Q28	2-7	A3A1A3R27	2-6	A3A1A3R66	2-6
A3A1A3Q29	2-7	A3A1A3R28	2-6	A3A1A3R67	2-6
A3A1A3Q30	2-7	A3A1A3R29	2-6	A3A1A3R68	2-6
A3A1A3Q31	2-7	A3A1A3R30	2-6	A3A1A3R69	2-6
A3A1A3Q32	2-7	A3A1A3R31	2-6	A3A1A3R70	2-6
A3A1A3Q33	2-7	A3A1A3R32	2-6	A3A1A3R71	2-6
A3A1A3Q34	2-7	A3A1A3R33	2-6	A3A1A3R72	2-6
A3A1A3Q35	2-7	A3A1A3R34	2-6	A3A1A3R73	2-6
A3A1A3Q36	2-7	A3A1A3R35	2-6	A3A1A3R74	2-6

**SECTION IV INDEX-REFERENCE DESIGNATION
CROSS REFERENCE TO PAGE NUMBER (CONTINUED)**

REFERENCE DESIGNATION	PAGE NUMBER	REFERENCE DESIGNATION	PAGE NUMBER	REFERENCE DESIGNATION	PAGE NUMBER
A3A1A3R75	2-6	A3A1A3U1	2-5	A3A1A3X13	2-6
A3A1A3R76	2-6	A3A1A3U2	2-5	A3A1A3X14	2-6
A3A1A3R77	2-6	A3A1A3U3	2-5	A3A1A3X15	2-6
A3A1A3R78	2-6	A3A1A3U4	2-5	A3A1A3X16	2-6
A3A1A3R79	2-6	A3A1A3U5	2-5	A3A1A3X17	2-6
A3A1A3R80	2-6	A3A1A3U6	2-5	A3A1A3X18	2-6
A3A1A3R81	2-6	A3A1A3U7	2-5	A3A1A3X19	2-6
A3A1A3R82	2-6	A3A1A3U8	2-5	A3A1A3X20	2-6
A3A1A3R83	2-6	A3A1A3U9	2-5	A3A1A3X21	2-4
A3A1A3R84	2-6	A3A1A3U10	2-5	A3A1A3X22	2-6
A3A1A3R85	2-6	A3A1A3U11	2-5	A3A1A3X23	2-6
A3A1A3R86	2-6	A3A1A3U12	2-5	A3A1A3X24	2-6
A3A1A3R87	2-6	A3A1A3U13	2-5	A3A1A3X25	2-6
A3A1A3R88	2-6	A3A1A3U14	2-5	A3A1A3X26	2-6
A3A1A3R90	2-6	A3A1A3U15	2-5	A3A1A3X27	2-6
A3A1A3R91	2-6	A3A1A3U16	2-5	A3A1A3X28	2-6
A3A1A3R92	2-6	A3A1A3U17	2-5	A3A1A3X29	2-6
A3A1A3R93	2-6	A3A1A3U18	2-5	A3A1A3XQ1	2-7
A3A1A3R94	2-6	A3A1A3U19	2-5	A3A1A3XV1	2-6
A3A1A3R95	2-6	A3A1A3U20	2-5	A3A1A3XV2	2-6
A3A1A3R96	2-6	A3A1A3U21	2-5	A3A1A3XV3	2-6
A3A1A3R97	2-6	A3A1A3U22	2-5	A3A1A3XV4	2-6
A3A1A3R98	2-6	A3A1A3U23	2-5	A3A1A3XV5	2-6
A3A1A3R99	2-6	A3A1A3U24	2-5	A3A1A3XV6	2-6
A3A1A3R100	2-6	A3A1A3U25	2-5	A3A1A3A1	2-6
A3A1A3R101	2-6	A3A1A3U26	2-5	A3A1A3A1PC1	2-5
A3A1A3R102	2-6	A3A1A3W1	2-5		
A3A1A3103	2-6	A3A1A3X7	2-6		
A3A1A3R104	2-6	A3A1A3x8	2-6		
A3A1A3R105	2-6	A3A1A3X9	2-6		
A3A1A3R106	2-6	A3A1A3X10	2-5		
A3A1A3S1-3	2-7	A3A1A3X11	2-6		
A3A1A3S4	2-7	A3A1A3X12	2-6		

By Order of the Secretary of the Army:

Official:

VERNE L. BOWERS
Major General, United States Army
The Adjutant General

FRED C. WEYAND
General, United States Army
Vice Chief of Staff

Distribution:

Active Army

USASA (2)
 CNGB (1)
Dir of Trans (1)
 USAARENBD (2)
 AMC (2)
 ARADCOM (1)
 ARADCOM Rgn (1)
 OS Maj Cored (3)
 LOGCOMD (3)
 MDW (1)
 HISA (*Ft Monmouth*) (43)
 Armies (2)
 Corps (1)
 Div (1)
 Svc Colleges (2)
 USASCS (20)
 USAINYCS (5)
 Army Dep (1) *except*
 LBAD (9)
 SAAD (10)
 TOAD (7)
 ATAD (5)
 AV Comm Cen (1)
 TRADOC (1)

Fort Gordon (10)
Fort Huachuca (10)
 WSMR (1)
Fort Carson (5)
 USA Dep (2)
 Sig Sec USA Dep (3)
 Sig Dep (3)
 Sig FLDMS (1)
 ATS (1)
 USAERDAA (1)
 USAERDAW (1)
 USA CRREL (1)
Ft Richardson (ECOM Ofc) (2)
 Units org under fol TOE:
 (1 copy each unit)
 11-97
 11-98
 11-117
 11-500(AA-AC)
 29-134
 29-136
 29-402
 29-427
 44-568

NG: None

USAR: None

For explanation of abbreviations used see AR 310-50.

